

THE FLAME



1958

PUBLISHED BY

THE SENIOR CLASS

MONONGAHELA HIGH SCHOOL

MONONGAHELA, PENNSYLVANIA



Meade And Lincoln



Meade And Chess

The hills and valleys of Western Pennsylvania set a pattern for roads of varying types. A narrow dirt road has a beauty all its own, marked by contentment and still beauty. A curving river road leads uphill to a cleaner, clearer height, overlooking the

valley with its industry, and then stretches on to become a winding ridge road which curves past prosperous farm lands. Whether main road or footpath, familiar walk or strange avenue—each leads on into the future.



Curve In The High School Drive



Up The Ramp To School



The Road Not Taken

By Robert Frost

Two roads diverged in a yellow wood,
And sorry I could not travel both
And be one traveler, long I stood
And looked down one as far as I could
To where it bent in the undergrowth;

Then took the other, as just as fair,
And having perhaps the better claim,
Because it was grassy and wanted wear;
Though as for that the passing there
Had worn them really about the same,

And both that morning equally lay
In leaves no step had trodden black.
Oh, I kept the first for another day!
Yet knowing how way leads on to way,
I doubted if I should ever come back.

I shall be telling this with a sigh
Somewhere ages and ages hence:
Two roads diverged in a wood, and I—
I took the one less traveled by,
And that has made all the difference.

From COMPLETE POEMS OF ROBERT FROST. Copyright, 1930, 1949, by Henry Holt and Company, Inc. Copyright, 1936, 1948, by Robert Frost. Reprinted by permission of the publishers.



High Roads and Low Roads

High roads and low roads are symbols of school life. The way, at times, may seem difficult and endless. Curving here and there with the contour of the hills, the road ahead provides fresh inspiration as each phase of school life gives the student experience and knowledge. Then the way may lead along level ground through paths of cool beauty and quiet pleasures. Suddenly the road turns uphill and after strenuous climbing, the traveler reaches exhilarating heights and eventual achievement.

Calendar Of Events

| | |
|----------------------------------|----------------|
| School Opens | September 3 |
| Student Council Organizes | September 10 |
| First Football Game | September 14 |
| Clubs Organize | October 2 |
| Red & White Review on Sale | October 9 |
| Western Conference | October 11 |
| College Night | October 14 |
| Professional Assembly | October 15 |
| First Flame Drive | October 17 |
| Student Council Dance | November 4 |
| School Bonfire | November 11 |
| Class Play | November 14 |
| Thanksgiving Assembly | November 27 |
| Flame Skating Party | November 27 |
| Thanksgiving Vacation | November 28-29 |
| Christmas Pageant | December 18 |
| Christmas Dance | December 19 |
| Christmas Holiday Begins | December 23 |
| Christmas Vacation Ends | January 5 |
| Variety Show | January 14 |
| Career Day | January 24 |
| Hayseed Hoedown | February 12 |
| Debate | February 26 |
| Spring Holiday | February 28 |
| Assembly | March 20 |
| Senior Play | March 20-21 |
| Easter Assembly | April 2 |
| Easter Holiday | April 3-4-5 |
| Washington, D. C. Sr. Trip | April 17-18-19 |
| Band Concert | April 24-25 |
| Choral Concert | May 1 |
| Jr. - Sr. Prom | May 9 |
| Memorial Day | May 30 |
| Baccalaureate | June 1 |
| Class Night | June 2 |
| Commencement | June 3 |
| School Closes | June 6 |

Index

| | |
|---------------------------------|--------|
| INTRODUCTION | 15 |
| ADMINISTRATION & TEACHERS | 6-11 |
| SENIORS | 12-33 |
| UNDERCLASSES | 34-43 |
| ACTIVITIES | 44-65 |
| SPORTS | 66-76 |
| FEATURES | 77-79 |
| ADVERTISEMENTS | 80-120 |



BOARD OF DIRECTORS

Seated: Dr. Michael A. Plesher, Mr. William R. Hanna, Mr. Michael Smith Jr., Mr. Harry R. Sickels, vice president; Mr. Fred C. Charlton, president; Mr. Thomas E. Scurfield, Mr. John H. Coulson, Mr. W. R. Stevenson, secretary.
 Standing: Dr. John A. Griffiths, superintendent of schools; Mr. William H. Robinson, solicitor; Mr. E. E. Smith, treasurer



DR. JOHN A. GRIFFITHS
 Superintendent of Schools



MR. JOHN P. CONTE
 Principal of the High School



GUIDANCE COUNSELORS

Miss Styche, Juniors; Miss Severance, Dean of Girls; Mr. Davis, Chief Guidance Counselor; Miss Craig, Seniors; Mr. Neill, Sophomores

MR. NATHANIEL DAVIS
Chief Guidance Counselor



MISS ELVA SEVERANCE
Dean of Girls



MRS. PAT McFEELY
Secretary to the Principal

MISS KAY GILLINGHAM
Secretary to the Superintendent



HISTORY

Mr. Hornack, Mr. Katusa, Miss Burke, Mr. Fleming, Mr. Ermlick



LIBRARY SCIENCE

Miss Hardy

TEACHERS

THOMAS S. BARBERO

Faculty Manager of Athletics
Physics
Senior Science

RICHARD E. BARCLAY

Driver's Theory
Driver's Training

VIRGINIA B. BECKER

Business Economics
Business Law
Junior Business Training

MADELINE BOYLAND

Fundamentals of Speech I
Public Speaking II
Dramatics

SCIENCE

Mr. Kipp, Mr. Kahle, Mr. Barbero

ALICE M. BURKE

Journalism
History II

ALBERT CREE

Mathematics
Football and Basketball Coach

KATHRYN S. DORNAN

Choral Director
Music Counselor

WILLIAM ERMILICH

Problems of Democracy

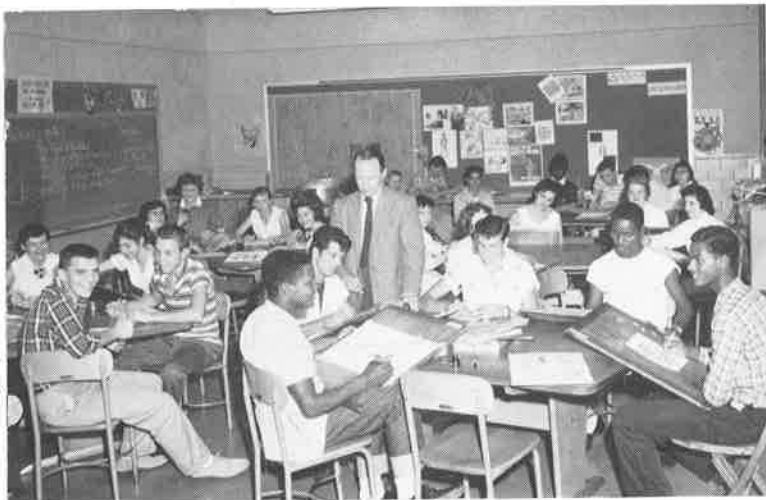
FRED H. FLEMING

American History III

MATHEMATICS

Mr. Ripepi, Miss Severance, Mr. Cree





ART

Mr. Krill



BUSINESS

Mrs. Becker, Miss Nuss, Miss Robertson, Mrs. Sharpnack, Mrs. Furnier, Miss Craig, Mr. Neill

TEACHERS

KATHLEEN V. FURNIER

Typewriting I
Exploratory Typewriting

FRANK M. HORNACK

World History

MARTHA E. IRWIN

Latin II
English III

HARRY A. JOHNSON

Physical Education
Health

F. CONRAD JOHNSTON

Industrial Arts

ERNEST M. KAHLE

Chemistry

JOHN KATUSA

History III
World Geography

DAVID F. KIPP

Biology

INDUSTRIAL ARTS

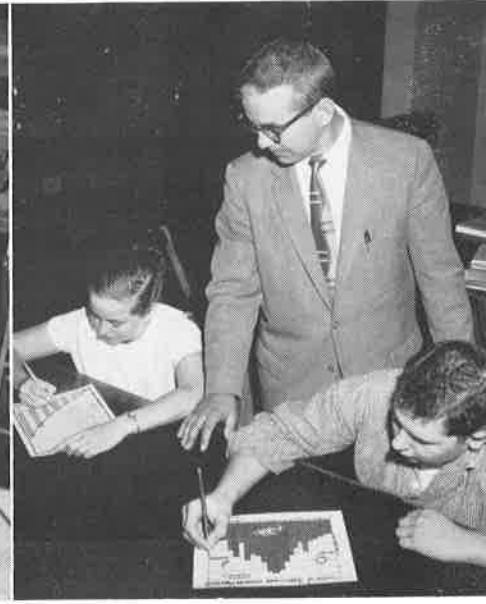
Mr. Onderko

MECHANICAL DRAWING

Mr. Johnston

DRIVING EDUCATION

Mr. Barclay





HOME ECONOMICS

Miss Vogliotti



CAFETERIA

Mrs. Davison, dietician and helpers: L. Volker, M. Sarnosky, K. Traverseri, Mrs. Davison, L. Hickman, C. Inserra, J. Mitchell

TEACHERS

ALEX KRILL

Instructor of Art

ROY S. LEFFARD

Health
Physical Education

HAZEN F. NEILL

Business English

RUTH E. NEVIN

Health
Physical Education

RUTH E. NUSS

Business Arithmetic
Clerical Practice-Selling

ANDREW ONDERKO

Industrial Arts I-II

LOUIS RAZZANO

English II

IRENE E. ROBERTSON

Shorthand II
Typing II
Consumer Education

WILLIAM RUTLEDGE

English II, III
Journalism
Commercial Geography

VOCAL MUSIC

Mrs. Dornan



INSTRUMENTAL MUSIC

Mr. Watkinson





DRAMATICS AND SPEECH

Miss Boyland



ENGLISH

Mrs. Tucker, Miss Irwin, Mr. Razzano, Miss Stewart, Mr.
Rutledge, Miss Styche



SPANISH, LATIN, FRENCH

Mrs. Tucker, Miss Irwin,
Miss Sweeney

TEACHERS

ELVA M. SEVERANCE

Geometry I, II
Trigonometry
High School Arithmetic
Dean of Girls

MILDRED SHARPBACK

Bookkeeping I and II

MARGARET S. STEWART

Journalism
English III, IV

ELLEN M. STYCHE

College English
English IV

ANNA BELLE SWEENEY

French I, II

JEANNE TUCKER

Spanish I, II
English II

FLORA VOGLIOTTI

Homemaking I
Homemaking II
Boys' Homemaking
Family Living

GEORGE WATKINSON

Supervisor of Instrumental Music

PHYSICAL EDUCATION AND HEALTH

Mr. Leffard
Miss Nevin
Mr. Simmen

Mr. Johnson

Mrs. Corrin
Miss Nevin

Miss Farkas
Mrs. Pizzutelli





SENIORS

The seniors follow a road of broad interests, tree-shaded in summer, through sunshine and shadow; snow-banked in winter, rut-bound and ice-crusted. Shadowed by moonlight or glazed by bright sunshine, the roadway leads on past orchard and meadow, factory or mine entrance. Most plans have been made with a pattern to follow: college, marriage, nursing, or business. All now have a plan, an aim for their life-work. The pathway is broad, curving on to the future.

SENIORS

This senior finds his last year the culmination of twelve years of work and play. He has now discovered his talents, selected his life work. He has assumed responsibilities in the home and the community. Though he is not an artist, he is able to accord literature, art and music a place of respect. He has developed a wider outlook on world affairs, a charity toward human nature. In anticipation he faces the road leading toward wider avenues of service.

Junior - Senior Prom



Voting for Class Officers





Senior Class Officers

George McFeely, treasurer; Sam Marra, president; Mr. Ermlick, sponsor; James Ellis, vice president; Judy Martin, secretary

SENIORS

JOANNE ADAMETZ

COMMERCIAL

History 1-2, Bel Canto 2, G.A.L. 3, Commercial 3.
Pretty blond hair . . . smiling eyes . . . usually with Mary Etta, Judy and Dorine.



CAROL JEAN ALEY

PREPARATORY

Spanish 1-2, History 2-3, Band 1-3, Flame Staff 3, Newspaper 3, Hall Duty 3.
Petite and neat . . . pleasing personality . . . happy smile . . . future Indiana co-ed.



ROSE MARIE AMBROSE

COMMERCIAL

Bel Canto 1-2, Commercial 2-3, English 1, School Choir 1-2, Flame Staff 3, Newspaper 3.
Sharp . . . a smile for all . . . diligent worker on the Red and White . . . bright future in business world.



JEANNENE ANN AFFINITO

PREPARATORY

History 1-3, Going to College, 3, French 2-3, Usherettes 1-3, Flame Staff 3, Newspaper 3, Hall Duty 2-3.
Smiley . . . unpredictable . . . a future pharmacist . . . capable usherette . . . Duquesne University-bound . . . a good friend



JOHN E. ALLEN

GENERAL

English 1, Boys' Athletics 2-3, Science 3, Baseball 3.
Sense of humor . . . comes from Courtney . . . takes an interest in P.O.D. . . . keeps Kelly's garage running.



MELVIN RAY ANDERSON

GENERAL

Boys' Athletics 1-3
Mel . . . interested in cars and mechanics . . . undecided future . . . quiet until one knows him better.



LINDA LOU BALLINGER

PREPARATORY

Biology 2, History 2, Driving 3.
Conservative . . . loves horses
. . . beautiful complexion . . .
college-bound . . . can be found
with Shelby and Kathy.

LINDA L. BARTOLOTTA

PREPARATORY

Photo 1, English 1, History 2,
Going to College 3, Science 3,
French 2-3, Hall Duty 3.
Exuberant personality . . . can
be found at the gates of S.V.C.
with Kay . . . college-bound.

MARY LOU BAXTER

COMMERCIAL

History 1, Commercial 2, Fu-
ture Teachers 3.
Attractive . . . a very diligent
worker . . . has a pleasant
smile for everyone.

JOHN A. BELICINI

SCIENTIFIC

Hunting and Fishing 1, Arch-
ery, Band Club 2-3, History 2,
Science 3, Band 1-3.
Friend to all . . . enjoys chem-
istry . . . always laughing . . .
likes to play his sax . . . fu-
ture Penn State man.

ARLENE BISSELL

COMMERCIAL

English 1-2, Dance 1, Commer-
cial 1, Future Teachers 3.
Unusual laugh . . . a friendly
personality . . . anxious for
graduation.

JOSEPH BOBNAR

GENERAL

Hunting and Fishing 1, Chefs'
2-3, Projector Committee 2-3.
Joe . . . favorite pastime is
talking . . . happy-go-lucky . . .
never serious . . . everybody's
pal . . . never complains.



WILLIAM BARKEY

GENERAL

Biology 2, History 1, Football
1-2, Baseball 1, Basketball 1-2,
Track 2.

Bill . . . happy individual . . .
usually in the halls with John
and Donnie . . . interested in
the Armed Forces.

PRISCILLA A. BARTKO

COMMERCIAL

English 1, Library 2-3, Driving 3.
Pleasant disposition . . . quiet
outside of her own circle of
friends . . . usually with Shelby.

BARBARA ANN BEDNAR

COMMERCIAL

Photo 1, Dramatics 1, History
2-3, Future Teachers 2-3, Ser-
vice Center 2-3, Daily Bulle-
tins 1.

Barb . . . neat dresser . . .
always cheerful . . . favorite
pastime—telling jokes . . . in-
terested in Columbia University.

ROSEMARY M. BINDI

COMMERCIAL

English 1, Dance 1, History 2,
Future Teachers 2-3, Commer-
cial Going to College 3, Mixed
Ensemble 1, Chorus 1.

Mo . . . beautiful hair . . .
very attractive . . . friendly
smile . . . always with Elaine,
Linda and Margie.

PATRICIA ANN BOAL

COMMERCIAL

English 1, History 2, Band Club
2-3, Choir 1-2, Student Council
2, Majorette 1-3.

Dolly . . . sharp majorette . . .
likes to dance . . . pleasing
smile . . . lilting voice . . .
high ambitions.

MARY LU BORRELLO

COMMERCIAL

English 1, Dance 1, History 2,
French 2, Usherettes 1-3, Flame
Staff 3, Newspaper 3.

Capable member of the Flame
Staff . . . reliable friend . . .
fun-loving but hard working
. . . will make an efficient
secretary.

MICHAEL L. BOVE

GENERAL

Archery 1, Senior Sports 3,
Football 1-3.
Mike . . . quiet . . . has a
smile for all . . . a good sport
. . . easy to get along with.



ELLEN BRICE

COMMERCIAL

Music 2-3, G.A.L. 3.
A keen sense of humor . . .
neat . . . friendly . . . likes ad-
venture . . . most often seen
with Janice . . . lots of admirers.

JANICE MARIE BRISCOE

COMMERCIAL

G.A.L. 2-3, Bel Canto 3, Volley-
ball 1-3, Basketball 2-3.
Always laughing . . . a friend-
ly greeting for everyone . . .
beautiful voice . . . capable . . .
always peppy.



CAROLYN BURNWORTH

GENERAL

Bel Canto 1-3, English 1, Driv-
ing 3, Hall Duty 1-2.
Favorite pastime is drawing
. . . interests lie outside of
school . . . pleasant person to
know . . . friendly smile.

DAVID A. BURYA

PREPARATORY

Flame Staff 3, Newspaper 3,
History 1-2, Band Club 2-3,
Spanish 2.
Dave . . . plays a cool sax . . .
keen sense of humor . . . sharp
dresser . . . good looks . . . a
capable journalist.



EDWARD G. BUSZINSKI

COMMERCIAL

Football 1-2.
Ed . . . good sense of humor
. . . likes all girls . . . always
has a smile . . . often seen in a
green Ford.

NANCY CALDWELL

COMMERCIAL

Rangerettes 1, English 1, Ser-
vettes 2-3, Tri-Hi-Y 2-3, Service
Center 2, Hall Duty 2.
Sharp dresser . . . a dark-hair-
ed beauty . . . always a friend-
ly smile . . . wedding bells are
in her future.



CLIFFORD JAMES CAMPBELL

COMMERCIAL

English 2, Commercial 3, Driv-
ing 3.
Cliff . . . quiet until one knows
him better . . . one of our fu-
ture businessmen . . . an asset
to the senior class.

NELITA J. CAMPBELL

COMMERCIAL

Music 1-2, Commercial 2, Driv-
ing 3, Tri-Hi-Y 3.
Friendly and happy . . . greets
every one with a pleasant
smile . . . a bright future lies
ahead for her.



ROSE KATHERINE CAMPBELL

COMMERCIAL

English 1, History 2, Spanish 2,
Dance 1, Commercial 3, Daily
Bulletins 2, Hall Duty 2-3.
Bonnie . . . pleasant disposition
. . . neat . . . looks exception-
ally nice in a pony tail . . .
comes from Finleyville.

BEATRICE M. CHRISTINA

COMMERCIAL

Usherettes 1-3, English 1, Dance
1, Bel Canto 2, History 2, Fu-
ture Teachers 3, Daily Bulletins
2-3, Hall Duty 2.
Bea . . . neat . . . a capable
usherette . . . accepts respon-
sibilities . . . high ambitions
. . . diligent worker.



RONALD COMINSKY

PREPARATORY

Latin 1, Going To College 2,
Boys' Athletics 2-3, Sportmen's
3, Flame Staff 3, Newspaper 3,
Student Council 1-3.
Ron . . . neat dresser . . .
pleasant personality . . . dili-
gent worker on the publica-
tions' staffs.

PATRICIA J. CONNELL

SCIENTIFIC

Biology 1, English 1, History 2, French 2-3, Going to College 3, Science 3, School Play 3, Senior Play 3.

Pat . . . takes school seriously . . . hard worker . . . hopes to become a scientist . . . great sense of humor.



ROSE FRANCES CRAWFORD

COMMERCIAL

Bel Canto 2-3, G.A.L. 1-3.

Fran . . . neat . . . pleasant personality . . . generous . . . kind to all . . . dislikes her name Rose.

WILLIAM A. CREE

PREPARATORY

Hunting and Fishing 1-2, Archery 1-3, Spanish 2, Science 3. Bill . . . well-liked . . . makes friends easily . . . loves farming . . . future college student.



TERRY CRISWELL

GENERAL

Boys' Athletics 1-3, Sportmen's 3, Hi-Y 1, Chorus 1-2.

Ornery . . . will be happy after graduation . . . a friendly word for everyone . . . responsible for a few gray hairs.

PAULA JANE DANNELS

PREPARATORY

Library 1-3, English 1, History 2-3.

Conservative . . . always a pleasant smile . . . diligent worker in the library . . . a good friend to all.



PRISCILLA MAE DAVIS

COMMERCIAL

English 1, Commercial 2, Business Going to College 3.

Capable worker in the office . . . always courteous . . . sense of humor . . . interests lie outside of M.H.S. . . . usually with Carolyn.

MARY BETH DAWSON

COMMERCIAL

History 1, Commercial 2-3.

Petite . . . neat . . . likes to do things for other people . . . everyone's friend . . . excels in all she does.



JUDITH ANN DEICAS

PREPARATORY

History 1, Rangerettes 1, Dramatic 2, Future Teachers 2, Biology 2, Science 3, Going to College 3.

Judy . . . slide rules baffle her . . . nice to know . . . usually seen with Dorine and Mary Etta.

NANCY E. DEVORE

PREPARATORY

Spanish 2, Driving 3.

Red hair and friendly personality . . . enjoys Spanish class . . . takes school seriously . . . interests outside of school.



MILTON PAUL DIAZ

GENERAL

Biology 1, Hunting and Fishing 1, Spanish 2, Hi-Y 2-3, Varsity 3, Football 1-3, Basketball 1-3, Soccer 2, Baseball 1-3, Student Council 2.

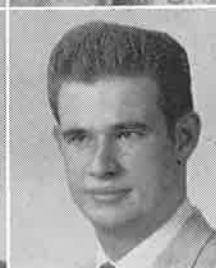
Dink . . . excels in all sports . . . loads of fun . . . easy to get along with . . . laughing eyes.

JOANNE C. DICKMON

PREPARATORY

Music 2, Driving 3.

Makes a nice appearance . . . soon to hear wedding bells . . . calm disposition.



FREDERICK N. DIRLING

SCIENTIFIC

Latin 1, Biology 2, Science 3, Choir 3.

Fred . . . would rather be any where than in school . . . great sense of humor . . . enjoys Spanish . . . friendly to all.

EMANUEL PETER DONINA

GENERAL

Band Club 2-3, History 1, Biology 1, Boys' Athletics 2, Band 1-3, Soccer 2.

Where there's Pete there's laughter . . . pleasant personality . . . wonderful person to know . . . always a good friend.

SANDRA DRAGONE

PREPARATORY

Dramatics 1, Photo 1, History 2-3, French 2, Going to College 2-3, Flame Staff 3, Newspaper 3, Student Council 1, Cheerleader 1-3.

Peanuts . . . vivacious . . . our capable head cheerleader . . . friend to all . . . lucky Penn State! . . . unpredictable.

CAROL LOUISE ECKELS

COMMERCIAL

Rangerettes 1-3, Driving 1. Pleasant . . . a friendly word for all . . . good student . . . bright future lies ahead.

MARJORIE LOU ELLIS

COMMERCIAL

Commercial 2, Bel Canto 2, Going to College 3, Band Club 3, Majorette 3.

Margie . . . even disposition . . . sharp majorette . . . lots of fun . . . an asset to the senior class.

EDWARD FABIN

GENERAL

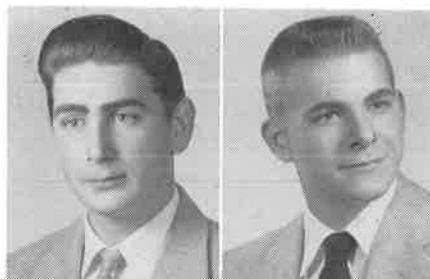
Hunting and Fishing 2, Archery 2-3, Boys' Athletics 3. Ed . . . quiet until one knows him better . . . can usually be seen with Ed, Chuck and Rich.

MICHAEL FERRARI

SCIENTIFIC

Hi-Y 1, Band Club 1-3, Spanish 2, History 2-3, Engineers 2, Band 1-3, Dance Band 2-3, Tennis 2, Student Council 2-3.

Mickey . . . popular . . . Mr. President of the Student Council . . . a future college man . . . plays a dreamy trumpet.



JAMES K. DONOVAN

GENERAL

Boys' Athletics 2, Archery 2. Jay . . . pleasing person . . . likes to hunt and fish . . . comes from Gastonville . . . happily awaits graduation.

MARY JO ANN DRECHSLER

COMMERCIAL

History 2-3, Going to College 2, Commercial 3, Flame Staff 3, Newspaper 3, Service Center 3. Jo Ann . . . obliging . . . usually seen riding in a Porsche . . . sharp dresser . . . interested in Pitt.

JAMES R. ELLIS

PREPARATORY

History 1-3, Bel Canto 1, Going to College 2-3, Student Council 3.

Zig . . . outrageous sense of humor . . . always good for a laugh . . . sharp dresser . . . wonderful dancer . . . capable Veep of the senior class.

BRYAN PATRICK ELLSWORTH

PREPARATORY

Latin 1-2, History 1, Future Engineers 2, Going to College 3, Flame Staff 3, Newspaper 3, Student Council 1.

Always making people laugh . . . easy-going . . . can usually be seen with a flash bulb.

RONALD D. FEDORCHAK

PREPARATORY

Sportsmen's 2, Boys' Athletics 1-3, Archery 2.

Ronnie . . . pleasant personality . . . usually seen in Span and Taylor's . . . loads of fun.

THOMAS DUKE FISHER

GENERAL

Boys' Athletics 1, Hunting and Fishing 2, French 1, Sportsmen's 3, Soccer 1-2, Football 2, Basketball 2-3.

Tom . . . usually quiet . . . sense of humor . . . happily awaits graduation . . . liked by all.

KEITH FORD**SCIENTIFIC**

Biology 1, Future Engineers 2, Science 3.

Keith . . . liked by all his fellow classmates . . . extremely intelligent . . . sure to succeed . . . a future college student.

**LANA LEE FORSYTH****COMMERCIAL**

English 1, History 2, G.A.L. 1. Lana . . . runs to school every morning . . . does she ever sit down? . . . always talking . . . usually seen in Span & Taylor's.

ADAM FOYTIK**SCIENTIFIC**

English 2, Archery 2, Science 3, Biology 1, Varsity Sports 3, Football 1-3.

Jerry . . . one of our able football players . . . happy-go-lucky . . . a diligent worker . . . enjoys school.

**ELAINE FREYCENET****COMMERCIAL**

Bel Canto 1-3, Photo 1, Servettes 2.

Teeters . . . good sense of humor . . . attractive . . . bubbling personality . . . always has a good joke.

MARY JANE FUSCO**COMMERCIAL**

Dance 1, G.A.L. 2, Bel Canto 2-3, Commercial 3.

A pretty smile . . . liked by all . . . faithful friend . . . can usually be seen with Donna.

**JOY GANDLEY****PREPARATORY**

Biology 1, History 1-3, Future Teachers 2, French 1-2, Going to College 3, Flame Staff 3, Newspaper 3, Service Center 3. Sharp . . . nifty dresser . . . capable president of Demo Club . . . interests lie outside of school . . . those lucky first graders.

COLEEN KAYE GAVAGHAN**PREPARATORY**

Servettes 1-3, French 2-3, Tri-Hi-Y 3, Dance 1.

Would rather be any place than in school . . . loves to drive . . . friendly to all . . . always neat.

**LINDA GAYHART****COMMERCIAL**

Dance 1, English 1, Band 2-3, History 2, Business Going to College 3, Majorette 1-3, Hall Duty 2-3.

Lin . . . one of our high-stepping majorettes . . . will be hearing wedding bells soon . . . nice to everyone.

CARLTON L. GELTZ**SCIENTIFIC**

Biology 1, English 1, Future Engineers 2, Science 3, Going to College 3.

Pleasant personality . . . easy-going . . . liked by all . . . surprising . . . always good for a laugh.

**JOHN R. GERBOC****SCIENTIFIC**

English 1, Biology 1, Future Engineers 2, Science 3, Student Council 1-3.

Bobby . . . crazy laugh . . . lively personality . . . rare sense of humor . . . many friends . . . unpredictable.

MARY JANE GIBSON**COMMERCIAL**

English 1, Dance 1, History 2, Future Teachers 2-3, Commercial 3.

Gibby . . . nifty dresser . . . interests outside of M.H.S. . . . attractive . . . can usually be seen with Linda and Elaine.

**MARILYN GAY GREGORY****PREPARATORY**

Spanish 1-2, Future Teachers 3, Science 3, English 1, Girls' Chorus 1, Choir 2.

Where did she get that wave? . . . can be found with Viv, Carol, Jean and Patty . . . California here she comes!

VIVIAN ARLENE GREGORY

PREPARATORY

History 1, Spanish 2, Bel Canto 3, Girls' Choir 1, Choir 2-3, Girls' Ensemble 3, Service Center 3, Hall Duty 3.

Viv . . . always talking . . . loves to drive . . . usually seen with Carol, Patty, Jean and Marilyn . . . from Gastonville.



RONALD J. GUYDAN

GENERAL

Biology 1, French 3, Science 3. Ronnie . . . usually seen with John, Don, and Vern . . . works after school . . . enjoys driving.



BEVERLY K. HAMILTON

COMMERCIAL

English 1, Band Club 2-3, Commercial 2-3, Band 1-3.

Bev . . . beautiful hair . . . bubbling personality . . . everyone's friend . . . welcome addition to the clarinet section.



JOHN HARSH

GENERAL

Archery 1-3.

Hunting and Fishing 1-2, Archery 3.

Quiet . . . diligent worker . . . happily awaits graduation . . . a great friend . . . care-free.



RUTH ANN HEMMINGS

COMMERCIAL

Usherettes 1-3, Bel Canto 2, Rangerettes 1.

Sweet and neat . . . a real friend . . . intelligent . . . an asset to the senior class.



PATRICIA HILLMAN

COMMERCIAL

English 1, G.A.L. 1, Bel Canto 1-3.

Patty . . . main interest outside of school . . . friendly to all . . . last seen riding in a green Chevy.



LYNN L. GUARINONI

GENERAL

History 1, Sports 3.

Comes from Victory Hill . . . quiet until known better . . . often drives the family car . . . not a care in the world.



ROBERT L. HAINES

GENERAL

Archery 1-3, Hunting and Fishing 1-2.

Bob . . . friendly . . . very quiet until better acquainted . . . an asset to the senior class . . . easy going.



DOROTHY HATFIELD

COMMERCIAL

English 1, Dance 1, Bel Canto 2-3, Driving 3.

One of our future homemakers . . . quiet outside of her own circle of friends . . . nice to know.



JOSEPH HARSH

GENERAL

Joe . . . would rather sleep than do his P.O.D. a friendly personality . . . a future businessman.



DONNA HESS

GENERAL

G.A.L. 1-2, Bel Canto 1-2.

Friendly to all . . . neat dresser . . . sweet personality . . . a success in anything she attempts.



MARY LOUISE HOFF

PREPARATORY

Band Club 3, History 2, English 1, Spanish 2, Majorette 1-3.

Lulu . . . nifty majorette . . . neat dresser . . . calm disposition . . . future co-ed of California STC.



SUSANNE HOLMES**GENERAL**

History 3, Bel Canto 3, Ensemble 3, Choir 3.

Sue . . . a welcome addition to the ensemble . . . makes friends easily . . . a future airline hostess . . . friendly smile.

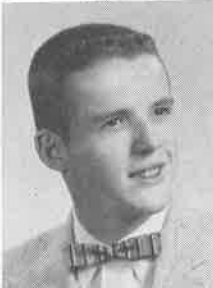
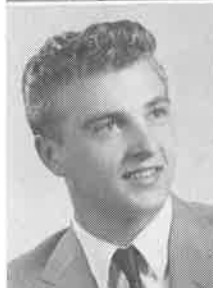
**THOMAS A. HOON****SCIENTIFIC**

Science 3, Future Engineers 2. Tom . . . popular with the girls . . . usually found where there is fun and laughter . . . a loyal friend.

PETE HOOSAC**GENERAL**

Sportsmen's 3, Football 1-2, Soccer 2, Baseball 3.

Pete . . . a New Eagle lad . . . usually seen with his gang . . . would rather be any place than in school.

**ROBERT K. HUNTER****GENERAL**

Archery 1, Bel Canto 2, English 1, Boys' Athletics 2-3, Sportsmen's 3.

Bob . . . a faithful member of 4-H Club . . . always causing a riot or can't stay awake in class.

MARJORIE JANE HUTTIG**GENERAL**

Servettes 1-3, Tri-Hi-Y 3, Service Center 2, Daily Bulletins 1, Hall Duty 1.

Margie . . . nifty dresser . . . will be hearing wedding bells in June . . . a future beautician.

**RICHARD HYSLOP****GENERAL**

Boys' Athletics 2-3, Future Teachers 3.

Buck . . . does anything to get out of class . . . outlandish sense of humor . . . liked by all . . . enjoys Rock and Roll.

JEAN CAROL IMMEL**PREPARATORY**

History 1, Biology 3, Science 3. Dramatics 2, Bel Canto 1, Flame Staff 3, Newspaper 3, Service Center 3, Senior Play 3.

Pert redhead . . . future nurse . . . can be found with Viv, Carol, Patty and Marilyn . . . beautiful smile.

**PATRICIA LOUISE ISAAC****GENERAL**

History 1-2, G.A.L. 1, Biology 2. Patty . . . very friendly . . . loves motorcycles . . . seen at Martello's . . . her homemaking class will prove helpful.

JUDY E. JEFFERS**COMMERCIAL**

History 1-3, Future Teachers 2-3, Hall Duty 3.

Will make a fine secretary . . . pretty black hair . . . anxiously awaits the school bus at 3:15.

**DOROTHY M. JENKINS****GENERAL**

G.A.L. 1-3, Bel Canto 2-3, Girls' Choir 1, Choir 2-3, Girls' Ensemble 3, Hall Duty 2-3, Basketball 1-3, Volley Ball 1-3, Softball 1-3.

Dotty . . . future model . . . top athlete . . . valuable contribution to the alto section of the Ensemble . . . a friend to all.

JOAN JOHNSTON**PREPARATORY**

English 1, History 2, Going to College 2, Future Teachers 3, Science 3, Hall Duty 2, Senior Play 3.

Joni . . . sweet and neat . . . college-bound . . . obliging . . . always ready to go somewhere.

**REGINA M. JONAS****PREPARATORY**

English 1, Dance 1, History 2-3, French 2, Future Teachers 3.

Jeannie . . . little blond . . . always talking . . . runs to school every morning . . . sure to succeed.

GRIFFITH J. JONES**PREPARATORY**

Archery 1-3, Hunting and Fishing 1-2, Spanish 2, Science 3, Stage Crew 2-3.

Griff . . . main interest is farms . . . forever "discussing" with Mr. Ermlick . . . friend to everyone.

**PATRICIA KELLY****GENERAL**

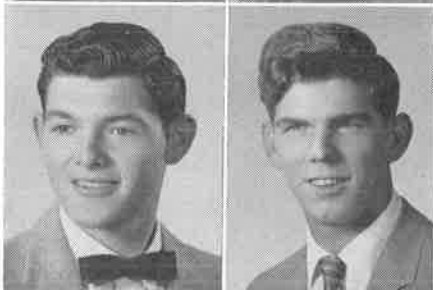
Dramatics 1-3, Bel Canto 1-3, Choir 1-3, Mixed Chorus 1-2.

Patty . . . petite . . . wonderful dancer . . . likes dramatics . . . acts in the Pittsburgh Playhouse.

**JOHN A. KIRSCHNER****PREPARATORY**

English 1, Archery 1-3, History 3, Spanish 2.

Jack . . . loads of fun . . . active 4-H member . . . future farmer . . . a pleasant word for all.

**MICHAEL E. KRISTON****GENERAL**

French 2, Sportsmen 3, Boys' Athletics 1-3.

Mike . . . always smiling . . . never a dull moment with Mike around . . . what would Miss Sweeney do without him?

**MICHAEL A. LECO****SCIENTIFIC**

Biology 1, English 1, Future Engineers 2, Science 3.

Mike . . . highly intellectual . . . has a bright future . . . care-free . . . likes to kid . . . always enjoys a good joke.

**LOIS E. LEES****COMMERCIAL**

English 1, Commercial 2-3, Tri-Hi-Y 3, Service Center 2.

One of the Gastonville gang . . . drives a Chevy . . . interests outside of school . . . never a dull moment.

**SHIRLEY ANNE JURÓFCIK****PREPARATORY**

Latin II-1, Spanish 2, Hall Duty 2.

One of our studious girls . . . always friendly . . . dependable and sincere . . . pleasant personality . . . likes school.

**SANDRA K. KENNEL****PREPARATORY**

History 1-3, Biology 2, Bel Canto 1, Band Club 2, Future Teachers 3, Band 1-3, Chorus 2.

Kennell . . . best sense of humor in the senior class . . . great friend . . . neat . . . happy-go-lucky.

**JOHN R. KOVAL****COMMERCIAL**

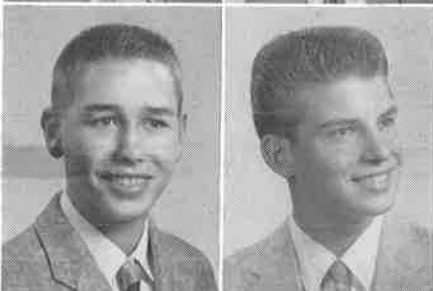
Archery 1-3, Hi-Y 1-3, Hunting and Fishing 1, Sports 1-3.

Graduation will make him the happiest lad in the world . . . enjoys P.O.D.

**WILLIAM T. LEACH****GENERAL**

History 3, Boys' Athletics 1, Archery 2, Hunting and Fishing 2, Basketball 2-3, Stage Crew 3.

Bill . . . sharp dresser . . . plans to join Armed Forces . . . friendly . . . attractive appearance.

**MARY KATHRYNE LEEPER****COMMERCIAL**

History 1-2, Bel Canto 3, Rangerettes 1-2, Dramatics 3, Volleyball 2, Flame Staff 3, Newspaper 3.

Future secretary . . . beautiful hair . . . a smile for everyone . . . valuable worker at McCrory's . . . a good student.

**CHARLES DENNIS LEGGON****PREPARATORY**

Latin 1, Future Engineers 1-2, French 3, Flame Staff 3, Newspaper 3, Boys' Athletics 1-3, Basketball 1, Sportsmen 3.

Butch . . . ambition—to join the Air Force . . . takes work seriously . . . is sports editor for the Red and White.



RAYMOND LINDLEY**GENERAL**

Scinece 3, Hunting and Fishing 3.

Ray . . . a diligent worker . . . intelligent . . . a definite asset to the senior class . . . friendly.

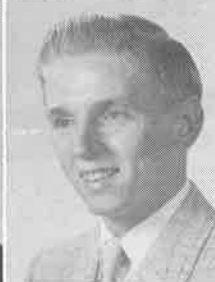
**KATHRYN LOCKE****COMMERCIAL**

Commercial 2-3, Biology 2, English 1, Dance 1, Usherettes 1-3.

Kathy . . . quiet when she wants to be . . . sweet personality . . . high ambitions.

CAROLE JO LONG**GENERAL**

Bel Canto 1-3, English 1, Dramatics 2, Choir 1-3, Ensemble 3. Strawberry blond . . . wears a beautiful diamond . . . sings well . . . anxiously awaits graduation . . . usually with Shirley.

**KENNETH D. LOUTTIT****SCIENTIFIC**

Biology 1, Hi-Y 1, History 2-3, Future Engineers 2, Going to College 3, Stage Crew 1-3.

Kenny . . . valuable member of the stage crew . . . takes school seriously . . . has a friendly smile for everyone.

CONSTANCE MAMIE**PREPARATORY**

English 1, Bel Canto 1, History 2-3, French 2-3, Going to College 3, Usherettes 3, Flame Staff 3, Newspaper 3, Hall Duty 3, Student Council 3. Connie . . . capable assistant photographer of Flame . . . lots of fun . . . friendly smile . . . natural black wavy hair.

**PATRICIA MANCINI****COMMERCIAL**

Servettes 2-3, Tri-Hi-Y 3.

Patty . . . fun-loving . . . natural curly hair . . . future businesswoman . . . enjoys eating and sleeping.

RONALD T. MARCASE**GENERAL**

Soccer 1-3, Stage Crew 3. Ronnie . . . quiet until one knows him better . . . one of the mighty eleven . . . likes to work on stage.

**SAMUEL JOHN MARRA****PREPARATORY**

Going to College 3, History 1-2, Student Council 1-3.

Sam . . . Mr. President of our senior class . . . a pal to all . . . sharp dancer . . . future college man.

RICHARD MARRACCINI**GENERAL**

Boys' Athletics 1-3, Hunting and Fishing 1, Archery 3. Rich . . . always has a convincing argument . . . undecided future . . . can't wait until June.

**CLAIRE E. MARTIN****COMMERCIAL**

English 1, History 2, Commercial 3.

Quiet, sweet, and petite . . . enjoys school . . . a pleasant smile for all . . . comes from Finleyville.

JUDY A. MARTIN**PREPARATORY**

English 1, Band Club 2-3, History 2-3, Spanish 2, Majorette 1-3.

Alluring blond . . . package of dynamite . . . snappy head majorette . . . capable secretary of senior class.

**MERRIE ANGELINE MARTINO****COMMERCIAL**

History 1-2, Commercial 3.

Has a beautiful smile . . . lovely hair . . . talented in art . . . good student . . . interested in the Armed Forces.

BONNIE GAY MATTHEWS**PREPARATORY**

Dramatics 1, Band Club 1-3, History 2-3, French 2, Newspaper 3, Service Center 3. Bubbling personality . . . plays a cool flute . . . fun-loving . . . a friend to all . . . capable worker on the Red and White.

**RAYMOND LEWIS McFARLAND****GENERAL**

Boys' Athletics 1-3, Bel Canto 2-3, Varsity Sports 3, Mixed Chorus 2, School Choir 3, Basketball 1, Football 2-3, Baseball Manager 2-3, Projector Committee 3. Ray . . . a cheery hello for everyone . . . enjoys his friends . . . not concerned about school.

**CONNIE McGUFFIE****PREPARATORY**

G.A.L. 1, Rangerettes 1-3, Band Club 2, French 2-3, Band 1-2, Basketball 1-3, Volleyball 3, Mushball 1, Hall Duty 3. Connie . . . an intelligent student . . . college-bound . . . sure to succeed . . . enjoys driving the family car.

**JANE ANN McNAMEE****PREPARATORY**

History 1-3, Bel Canto 1, Usherettes 2-3, French 2, Going to College 3, Newspaper 3, Flame Staff 3, School Play 3, Senior Play 3. Neat dresser . . . flaming red hair . . . likes W & J . . . always sports the latest styles . . . an asset to any school.

**EDWARD H. MELLON****GENERAL**

Archery 3, Boys' Athletics 3. Eddie . . . attractive blue eyes . . . likes cars . . . usually seen with the gang from Valley Inn . . . undecided future.

**RONALD C. MILLER****GENERAL**

Boys' Athletics 3, Archery 3, Football 1. Ronnie . . . one of the mighty eleven . . . enjoys driving . . . forever making trips to Monessen . . . usually with Banjo.

**MARJORIE McCARTY****PREPARATORY**

Bel Canto 1-3, Latin 1, Driving 3. Margie . . . swell gal . . . hardly know she's around . . . usually seen with Patty and Joyce . . . a future nurse.

**GEORGE DALE McFEELY****PREPARATORY**

Hi-Y 1, Spanish 2, Future Engineers 2, Archery 3, History 3, Soccer 1-3, Baseball 3, Athletic Treasurer 3. Spike . . . can usually be found slaving at Isaly's . . . small but mighty . . . attractive appearance . . . controls the money of the senior class.

**GLENN McMAHON****PREPARATORY**

Bel Canto 1-2, English 1, School Play 3, Senior Play 3. Studious . . . will always be remembered as General Sir Thomas Elliot . . . always loading up his car . . . likes school.

**CATHY E. MELE****GENERAL**

History 1-3, Photo 1, Going to College 2-3, Girls Choir 1, Field Meet 1-2, Service Center 3. Always worrying about something . . . vibrant smile . . . catchy laugh . . . neat and sweet . . . interests outside of school.

**MARJORIE JEAN MELLOR****COMMERCIAL**

Tri-Hi-Y 1, G.A.L. 1, English 1-2, Library 3. Margie . . . nice to know . . . friendly smile for all . . . likes chewing gum . . . future secretary.

**VERNON MOMEYER****GENERAL**

History 1, Biology 1, Archery 2, Sportsmen's 3. Vern . . . pal to all . . . generous with his car . . . quiet until one knows him . . . eagerly awaits graduation.



NORMA JEAN MOUNTAIN

SCIENTIFIC

English 1, Dance 1, History 2, French 2-3, Science 3, Tri-Hi-Y 3, Flame Staff 3, Newspaper 3. Future pharmacist . . . lucky Duquesne! . . . pleasant smile . . . capable journalism worker . . . usually seen with Rose Marie and Mary Ann.

BARBARA MURRAY

COMMERCIAL

English 1, Tri-Hi-Y 1-2, Commercial 2-3. Barb . . . always happy . . . one of the Gastonville gang . . . never a care . . . fun to be with.

CLAYTON NEWMAN

GENERAL

Archery 1-2, Sportsmens' 1, Hunting and Fishing 1-2. Always writing notes . . . happily awaits graduation . . . enjoys eating and sleeping . . . often seen wandering around the halls.

REGINA C. O'HERN

PREPARATORY

History 1-3, Bel Canto 2, French 2-3, Going to College 3, School Play 3, Publicity for School and Senior Plays 2-3, Senior Play 3. Will be remembered as Lady Hortense . . . good student . . . hard worker . . . capable . . . pleasing personality.

DORINE MAE PANSERI

GENERAL

Servettes 2-3, French 2-3, Rangerettes 1, Going to College 3, G.A.L. 1. Pretty black curly hair . . . can be found with Judy and Mary Etta . . . interests outside of school.

FRANK ANTHONY PANSINO

SCIENTIFIC

Biology 1, Latin 2, Future Engineers 2, History 2-3, Going to College 3, Student Council 1-3, School Play 2-3, Senior Play 2-3. Neat . . . enjoys school . . . a future college freshmen . . . brilliant actor . . . friendly . . . has many admirers . . . has a hearty laugh.



BEN B. MOWERY

GENERAL

School Choir 3. Friendly . . . enjoys square dancing . . . sure to succeed . . . a former student of Bentleyville.

CHARLES NAGY

GENERAL

Archery 1-3, Hunting and Fishing 1-2, Sportsmen's 3. Chuck . . . friendly to all . . . likes to sleep . . . works for Acme . . . will probably enter the Armed Forces.

WILLIAM A. OATES

GENERAL

Band Club 1-2, Boys' Athletics 3, Hunting and Fishing 1-2, Band 1-3, Stage Crew 3. Bill . . . enjoys P.O.D. and arguing . . . undecided future . . . comes from Finleyville . . . where there's noise there's Bill

MARGARET OLEXA

COMMERCIAL

Dance 1, English 1, History 2, Future Teachers 2-3, Senior Secretaries 3, Girls' Chorus 1, School Choir 2, Ensemble 3. Good student . . . fun-loving . . . golden tresses . . . usually seen with Judy and Thelma . . . will be a good secretary.

ELAINE L. PANSERI

COMMERCIAL

Photo 1, History 1-2, Commercial Going to College 3, Future Teachers 2-3, Usherettes 1-3, Underclass Reporter 1-2, School Play 3, Senior Play 3. Excels in dramatics . . . bubbling personality . . . always a friendly word . . . a success in everything she attempts . . . a sharp dresser.

MARCIA ANN PAPAK

PREPARATORY

History 1-3, Bel Canto 1-2, French 3, Flame Staff 3, Newspaper 3. Always happy . . . another future nurse . . . everyone's friend . . . diligent worker on the business staff.

STEPHEN JOHN PARISH**SCIENTIFIC**

Dance 1, Latin 1, Spanish 2, History 2, Science 3, Going to College 3.

Steve . . . enjoys school . . . a future college student . . . very nice to know . . . a friend indeed . . . sense of humor.

**DONALD NEIL PELLEGRINI****PREPARATORY**

Biology 1, Sportsmen's 1-2, Basketball.

Don . . . has a special interest in the senior class . . . appealing looks . . . drives a Cadillac . . . sharp dresser.

**AGNES I. PERUNKO**

English 1, Dance 1, Music 2, Bulletins 2-3, Service Center 2, Usherettes 1-3.

An efficient office worker . . . asset to the senior class . . . interests outside of school . . . friendly word for all.

**MARY ETTA PETRAS****PREPARATORY**

History 1-2, Biology 1, French 2-3.

Quiet . . . interested in the armed forces . . . black hair . . . likes to drive her car . . . friendly . . . attractive.

**CHARLENE R. PEZZONI****COMMERCIAL**

English 1, Dance 1, History 2-3, Business College 2, Going to College 3, Flame Staff 3, Newspaper 3, Student Council 1-3, Service Center 3, School Play 3. Char . . . personality plus . . . editor of Red & White . . . another pretty co-ed . . . Veep of Student Council.

**KAY F. PODESTA****PREPARATORY**

English 1, Photo 1, History 2, Spanish 2, Going to College 3, Flame Staff 3, Newspaper 3, Student Council 2, Hall Duty 3. Sharp dresser . . . attractive smile . . . interest in S.V.C. . . . usually seen with Linda . . . college-bound.

**CHERYL L. PATTERSON****GENERAL**

G.A.L. 1-3, Tri-Hi-Y 1-3, Girls' Chorus 1, School Choir 2-3, Service Center 2-3, Hall Duty 2-3.

Usually quiet . . . often seen with Wanda . . . anxiously awaiting graduation . . . works in the Service Center.

**DONALD PENDER****PREPARATORY**

Biology 1, History 1-2, French 2, Chemistry 3, Baseball 2, Student Council 1-2.

Pender . . . makes friends easily . . . will be happy at graduation time . . . sharp dresser . . . vivid personality.

**MAUREEN C. PESOGNELLI****COMMERCIAL**

Photo 1, Future Teacher 2-3, History 2-3, Student Council 1.

Mo . . . nice to know . . . loves to dance . . . pleasant disposition . . . future secretary.

**METRO PETROSKY, JR.****PREPARATORY**

Hi-Y 1-2, Band Club 1, Going to College 2, History 3, Student Council 3.

Meatball . . . loves to dance . . . is a real friend . . . always smiling . . . likes to kid with Sam and Zig.

**RICHARD C. PLYMIRE****GENERAL**

Science 3, Band Club 1-3, Band 1-3, Dance Band 2-3.

Dick . . . mischievous . . . does anything to get out of class . . . contagious laugh . . . makes a good friend.

**MARY ANN POHLE****COMMERCIAL**

English 1, Bel Canto 1-2, Commercial 2-3, Mixed Chorus 2, Flame Staff 3, Newspaper 3, Service Center 3.

Cute and petite . . . good student . . . ardent worker in journalism . . . usually seen with Rose Marie . . . sure to succeed.



JO ANN M. POHTS

PREPARATORY

Art 1, History 1, Biology 1,
Going-to-College Club 2-3, Serv-
ettes 2-3, Senior Play 3.
High ambitions . . . a future
college student . . . an artist
. . . sure to succeed in anything
she attempts.

MARTHA A. PRENTICE

COMMERCIAL

English 1, Comercial 2, Bel
Canto 2, Driving 3, Tri-Hi-Y 3.
Skating is her favorite pastime
. . . a swell girl to get along
with . . . her future is in the
business world.

RAYMOND T. RACUNAS

PREPARATORY

English 1, Band Club 2, Sports
3, Band 1-3.
Ray . . . quiet and reserved . . .
a band member . . . liked by
all who know him . . . loves
French class.

MYRNA C. REED

COMMERCIAL

Bel Canto 2-3, English 1.
Takes school lightly . . . shy
. . . her friends are many,
her enemies few . . . happily
awaits graduation.

LORETTA ANN RIZZI

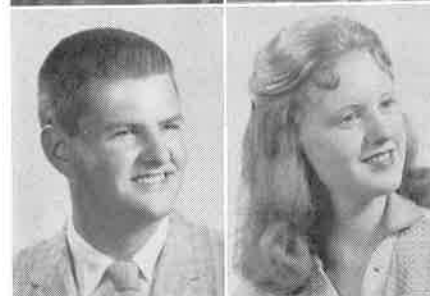
COMMERCIAL

English 1, Photo 1, Future
Teachers 2-3, Commercial 2-3.
Always neat . . . usually seen
with Barb and Judy . . . inter-
ested in the Air Force . . .
friendly to all.

TRACY L. ROBERTSON, JR.

SCIENTIFIC

Music 2, Boys' Athletics 1, Hunt-
ing and Fishing 2, School Choir
3, Football 2-3, Track 2.
Easy to get along with . . .
excellent artist . . . liked by all
. . . will be a success in any-
thing he undertakes.



MARY ELLEN POLONOLI

COMMERCIAL

Dance 1, Servettes 2-3, Tri-Hi-Y
3.
Usually drives to school . . .
always found with Nancy and
Patty . . . will begin house-
keeping in June.

WILLIAM PRITCHARD

GENERAL

Sportsmen's 1-2, Athletics 1.
Bill . . . tall and blond . . .
likeable . . . drives a Chevy
. . . works at Acme . . . plans
to join the armed forces.

PHYLLIS ANN RANKIN

PREPARATORY

Bel Canto 1-2, Dramatics 2,
Dance 1, Rangerettes 3, Serv-
ettes 3.
Alluring red hair . . . will be
hearing wedding bells soon . . .
usually seen with Carole and
Shirley . . . nice to know.

ROBERT RITTER

SCIENTIFIC

Future Engineers 2, Science 3,
Archery 3.
Bob . . . good student . . . nice
person to know . . . future col-
lege student . . . an asset to
the senior class.

JOYCE LEE ROBERTS

GENERAL

History 1, Bel Canto 1-3, Dra-
matics 2-3, Chorus 1, Mixed
Chorus 2, School Choir 3.
Friendly personality . . . likes
dramatics . . . interests outside
of school . . . usually found with
Mary Kay, Marjorie and Patty.

SHIRLEY ANN ROBISON

COMMERCIAL

History 1, Bel Canto 1-2, Serv-
ettes 2-3, Tri-Hi-Y 3, School
Choir 1, Girls' Ensemble 1-3,
Hall Duty 2.
Lovely voice . . . beautiful hair
. . . interests outside of school
. . . can be found with Carole
and Phyllis.

WANDA LEE ROBSON

PREPARATORY

G.A.L. 1-3, Tri-Hi-Y 1-3, Service Center 1.

Pleasant person to have around . . . usually seen with Christine and Cheryl . . . always has a smile . . . a friend to all.



NANCY JANE ROSE

COMMERCIAL

Rangerettes 1, Commercial 3, Hall Duty 3.

Petite type . . . interested in art pleasing personality . . . neat dresser . . . easy to get along with . . . hard worker.



LOIS J. ROSTCHEK

COMMERCIAL

History 1-3, Dance 1, Commercial Going to College 2, Future Teachers 3, Flame Staff 3, Newspaper 3.

Future secretary . . . ambitious worker on Red and White . . . pretty long hair . . . keeps Miller's running.

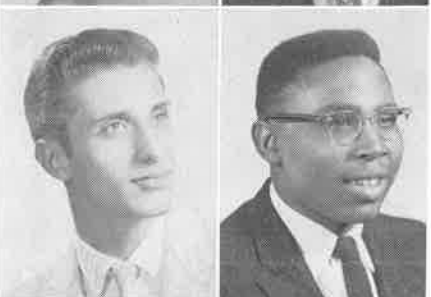


DONALD J. SAMPSON

SCIENTIFIC

Hi-Y 1, French 2, Archery 1, Science 3, Football 1.

Donnie . . . a real trickster . . . drags around town in his hot rod . . . friendly to all . . . main ambition — to graduate.



RONALD SAUNDERS

SCIENTIFIC

Sportsmen's 1-2, Engineers 2, Chemistry 3, Going to College 3, French 3, Basketball 1-3, Track 1-2.

Ron . . . detention again? . . . favorite saying— "Does anyone have his chemistry done? . . . sense of humor . . . everyone's friend.



BERNICE A. SCHUSTER

COMMERCIAL

Commercial 2-3, English 1. Sharp dresser . . . always talking . . . a clock watcher . . . interested in the senior class.



JAMES F. RONGAUS

GENERAL

History 1, Chefs 2-3.

Jig . . . witty . . . full of fun works diligently in the cafeteria . . . never a dull moment . . . anxiously awaits graduation.



MARY ANN ROSENSTEEL

COMMERCIAL

School Choir 3, Commercial 2.

Future businesswoman . . . is she really as quiet as she leads us to believe? . . . pleasant smile.



ROBERT ROULE

GENERAL

Band Club 1-3, Science 3, Hi-Y 1, History 2, Band 1-3, Track 1-3.

Bob . . . easy to get along with . . . future Penn State man . . . a serious student . . . always a friendly word.

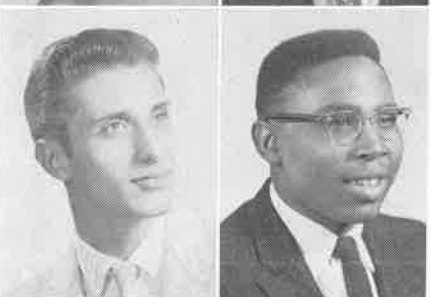


DAVID WILLIAM SAUNDERS

PREPARATORY

Boys' Athletics 1-2, Hi-Y, Varsity Sports 3, Football 1-3, Basketball 1, Projector Committee 3.

Dave . . . Keeps in training for football by running for the school bus every morning . . . natural born slow-poke.



DOLORES E. SCOTT

COMMERCIAL

G.A.L. 1-3, Bel Canto 2-3, Volleyball 1-3, Flame Staff 3, Newspaper 3.

Dee . . . the talkative type . . . energetic member of girls' volleyball team . . . bubbling over with enthusiasm . . . wears a diamond.



JOHN R. SEGURSKY

GENERAL

English 1, Boys' Athletics 1-3, Chefs' 2-3, Football 1-2.

Buddy . . . wavy black hair and brown eyes . . . speeds around town in a souped-up Ford.



MARYANNE SEWCHOK**COMMERCIAL**

Dance 1, History 2-3, Tri-Hi-Y 3, Hall Duty 2.
Midge . . . nice to have around
pleasant smile . . . pleasing
personality . . . future businesswoman.

GAYNELL SHEPERD**PREPARATORY**

Bel Canto 1, Biology 2, History 1-3, Future Teachers 2, Going to College 3, French 3, School Choir 1, Flame Staff 3, Newspaper 3, Student Council 1-3, Service Center 3.
Gay . . . Secretary of Student Council . . . editor of our Flame . . . personality plus.

CHRISTINE SKINKIS**COMMERCIAL**

English 1, G.A.L. 2-3, Tri-Hi-Y 3, Dance 1, Bel Canto 2, Band 1-3, Service Center 2.
Usually seen with Cheryl and Wanda . . . quiet, except when she's with the gang . . . an enthusiastic member of the band.

ELLA LOUISE SMITH**COMMERCIAL**

Bel Canto 1-3, History 1, G.A.L. 1-2, Chorus 2.
Will argue with anyone . . . says she'll buy on credit any day . . . looking forward to graduation.

WILLIAM A. SPOHN**PREPARATORY**

Band Club 1-2, Spanish 2, Future Teachers 3, History 3, Band 1-3.
Spohn . . . easy-going . . . full of fun . . . enjoys playing a drum . . . popular with the girls.

EMILY L. TESZNAR**COMMERCIAL**

English 1, Dance 1, Commercial 2, Bel Canto 2, Business College 3, Library 3, Mixed Chorus 2, Flame Staff 3, Newspaper 3.
Wonderful personality . . . a real brain in bookkeeping . . . she'll make a fine secretary . . . quiet? only when sound asleep.

**CAROLYN MARIE SHEMO****COMMERCIAL**

Dance 1, English 1, Commercial 2-3, Cheerleader 1-3, Hall Duty 2-3.
Sheem . . . one of our sharp cheerleaders . . . lots of pep . . . has a friendly word for everyone . . . sweet personality.

PHILIP SIMPSON**PREPARATORY**

Boys' Athletics 3, History 1, Band Club 1-3, Band 1-3.
Phil . . . plays a trumpet in the band . . . friendly . . . undecided future . . . last seen studying French.

MILLIE SKUTKO**COMMERCIAL**

English 1-2, Dance 1, Commercial Going To College 3, Tri-Hi-Y 3.
A happy smile for everyone . . . beautiful complexion . . . quiet —when she wants to be.

DARLENE SPINNER**COMMERCIAL**

G.A.L. 1, Servettes 2, Bel Canto 2, Rangerettes 1-3, English 1, Chorus 2.
Favorite pastime — talking . . . can be found at Eat'n Park . . . giggles quite frequently . . . eager for graduation.

JULIA STOFFEL**PREPARATORY**

History 1-2, Photo 1, Spanish 2, Driving 3, Bel Canto 3, Girls' Chorus 1, Mixed Chorus 2, School Choir 3.
She's driving now! — is that good or bad? . . . nice person to have around . . . friendly to all.

BETTIE JANE THOMAS**GENERAL**

Bel Canto 1-3, G.A.L. 2-3, Volleyball 3, Hall Duty 3.
Babba . . . exuberant personality and a laugh to match . . . everyone forgets his troubles when she's around . . . athletic type.

WILLIAM THORNLEY**GENERAL**

Boys' Athletics 1-3, Sportsmen's 3, Hi-Y 1.
 Bill . . . works at Roule's Garage . . . likes cars and Rock and Roll . . . usually seen with Bucky.

NANCY CAROL TUSCANO**COMMERCIAL**

History 1-2, Usherettes 1-3, Rangerettes 1-2, Future Teachers 3, Volleyball 2-3, Flame Staff 3, Newspaper 3, Service Center 3, Bulletins 2.
 Pettie and neat . . . oh, that beautiful diamond! . . . capable business manager of the Flame.

PATRICIA LOUISE VALIANI**PREPARATORY**

History 2-3, Future Teachers 3, Going to College 2, Cheerleader 3, Hall Duty 2-3.
 Patty . . . sharp cheerleader . . . nifty dresser . . . always talking . . . future co-ed.

JAMES VOELKER**GENERAL**

Hi-Y 1, Hunting and Fishing 1-2, Archery 1-2, Varsity Sports 3, Football 1-3, Baseball 2-3, Soccer 2, Hall Patrol 2-3.
 Jim . . . a tough center for the football team . . . interested in all sports . . . friendly . . . swell person to know.

WILSON WALTERS**SCIENTIFIC**

Hunting and Fishing 1-2, Archery 1-3, Jr. Sportsmen 3.
 Butch . . . outdoor type . . . enjoys hunting and fishing . . . always talking to Chuck . . . plans to join the Navy and see the world.

GARY A WASSEL**PREPARATORY**

Hi-Y 1, Science 3, Spanish 2, Future Engineers 2, Baseball 2-3, Student Council 1.
 Good student . . . usually found arguing with the brains of the class . . . future college man . . . liked by all.

JOHN TIMKO**GENERAL**

Boys' Athletics 1-3, Sportsmen's 3.
 Johnny . . . tall and blond . . . enjoys industrial arts . . . friendly to all . . . undecided future.

SHELBY JEAN TUSTIN**GENERAL**

Driving 3, Bel Canto 2-3, Chorus 2.
 Attractive . . . usually with Linda and Kathy . . . eagerly awaiting graduation . . . a nice girl to know.

VERNA FAY VILLERS**COMMERCIAL**

English 1, Dance 1, Commercial 2-3, Bel Canto 2-3, Chorus 2.
 Pretty, blue-eyes . . . seen with the gang from Courtney . . . has infectious laughter . . . never a dull moment.

CLARA SUE WALL**COMMERCIAL**

English 1, Commercial 2, Bel Canto 1-3, Driving 3, School Choir 2.
 Suzy . . . keeps everyone in stitches . . . lots of pep . . . likes the Navy . . . future secretary.

KENNETH E. WARD**SCIENTIFIC**

Hunting and Fishing 2, Chefs' 2-3, Spanish 2, Science 3, Band 1-2.
 Ken . . . keen sense of humor . . . hobby—girls . . . will look good in Air Force blue.

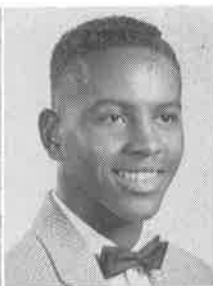
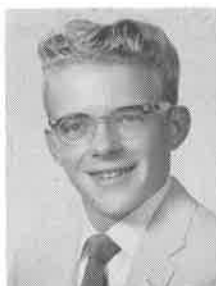
GEORGE WASSEL**GENERAL**

Hunting and Fishing 1, Band 1-3.
 Swell to know . . . likes hunting and other sports . . . usually seen with his brother . . . tolerates school.

WALTER WAUGH

GENERAL

Athletics 1-3.
Whitey . . . loads of fun to be
with . . . good natured . . .
neat dresser . . . quiet until
he's aggravated.



EDWIN WEAVER

PREPARATORY

Athletics 1-3, Chefs' 3, Archery
1, Bel Canto 2, Sportsmen's 1,
Stage Crew 3, Basketball 1-2.
Eddie . . . always seen tinkering
with cars . . . a talented
artist . . . popular with the girls
. . . pleasing personality.

FRANK WEIGHT

GENERAL

Bel Canto 1-3, Athletics 3, Choir
3, Chorus 2, Projector Committee
1-3
Better late than never . . .
wavy black hair . . . undecided
future . . . enjoys singing with
the "Dials".



KATHLEEN WHITE

COMMERCIAL

English 1, Future Teachers of
America 2-3, Photo 1, History 2,
Going to College 3.
Cookie . . . pals around with
Joni and Linda . . . sharp
dresser . . . likes to dance . . .
last seen at Slop's.

BARBARA ANN WILLIAMS

COMMERCIAL

History 1-2, Bel Canto 1, Future
Teachers of America 2-3, Com-
mercial 3, School Choir 1-2.
Barb . . . black hair and blue
eyes . . . always gay and
friendly . . . will make a fine
secretary.



BEVERLY WILLIAMS

PREPARATORY

English 1, French 2-3, History
1-3, Future Teachers 2-3, Photo
1, Service Center 3.
Bev . . . beautiful hair . . .
pleasing personality . . . "does
anybody want to hear a good
joke?" . . . always talking.

JO ANN WILLIAMS

COMMERCIAL

English 1, Commercial 3, Tri-
Hi-Y 2-3, Service Center 2.
Neat dresser . . . loves to
dance . . . has a special interest
in the senior class . . . always
happy.



LOIS E. WILLIAMS

COMMERCIAL

Rangerettes 1, G. A. L. 2-3, Bas-
ketball 1-3, Mushball 1, Hall
Duty 3.
Good student . . . usually seen
in a shiny black car . . . will
be a fine secretary . . . sure
to succeed.

THELMA A. WILSON

COMMERCIAL

History 2.
Always willing to give friendly
advice . . . talkative . . . nev-
er met anyone she didn't like
. . . unpredictable.



DONALD KEITH WOOD

PREPARATORY

Band Club 1, Hi-Y 1, History 2,
Chefs' 2-3, Band 1-3, Student
Council 1-3.
Keith . . . nice to everyone . . .
never serious . . . plays trum-
pet in the band . . . would love
to see Paris.

HAZEL LEE WYNN

COMMERCIAL

Quiet but friendly . . . studies
hard . . . glad that graduation
is near . . . her future career
may be homemaking.



JUDITH YEAGER

COMMERCIAL

Flame Staff 3, Newspaper 3.
Friendly . . . often seen riding
a motorcycle . . . interests out-
side of school . . . efficient
typist for the school publica-
tions.

DENNIS G. YERKEY

GENERAL

Science 3, Band Club 1-3, Band 1-3.
Yerk . . . sharp dresser . . . enjoys band . . . usually seen driving a shiny car . . . a future college man.



GEORGE P. YOUNG

GENERAL

Chefs' 1-3, Band 1-3.
Pat . . . takes his time getting anywhere . . . tolerates school . . . nice kid . . . enjoys band . . . loves to sleep.



NORMA ZENOBI

COMMERCIAL

Commercial 2-3, G. A. L. 1.
Quiet . . . conservative . . . a sweet personality . . . easy to get along with . . . will be happy in June.



JOHN E. WARREN

GENERAL

Curly red hair . . . would trade a year of school for a day of hunting . . . quiet, but alert.



EDGAR A. YOHE

SCIENTIFIC

History 1, French 2, Science 3. Basketball 2, Baseball 3.
Ed . . . life of the party . . . enjoys athletics . . . looking forward to graduation . . . liked by all.



REGINA ZATORSKY

Music 1-3, English 1, Dramatics 3
Jeannie . . . always has something important to say . . . can be found at Martello's . . . fun-loving . . . undecided future.



EDWARD TIRPAK

GENERAL

Hunting and Fishing 1-2, Archery 2-3.
Eddie . . . loves to answer the call of the wild game . . . plays a mean accordion . . . a fine friend.



Not Pictured

THEODORE TOLLIVER

GENERAL

Boys' Athletics 1-3, Sportsmen's 3, French 2, Projector Committee 2.

ROBERT W. GRACE JR.

PREPARATORY

Transferred from St. Mary's High School, St. Mary's, Pennsylvania, February 25, 1958.



Congratulations to the winner!



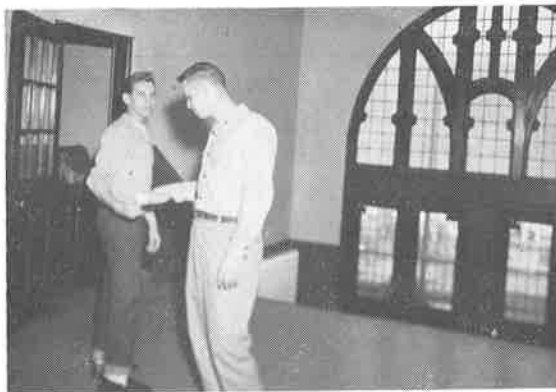
Farewell, Mr. LaFrankie



Joy tells Santa



Santa visits Demo Club



Hall patrol inspects lunch pass



Senior confers with Mr. Conte



UNDERCLASSES

Underclasses must follow a straight roadway ahead. Their interests are guided, their choices advised. Supervision may become irksome, discipline a bore, yet they are the symbols of interest and care. Though the road be tedious, unvaried, and planned, the young pupil is protected and encouraged until he is mature enough to know his own mind, to make his own choices, to be his own master. Still the pathway is pleasant, companions are gay, burdens weigh lightly, the future looks bright.

UNDERCLASSES

Underclass students have not yet assumed full responsibility for themselves or their work. Still their choices are wide, their work is not easy. They have settled on a definite course of study, they have joined certain clubs, they have become athletes or musicians, they have served on committees, assumed positions of trust. Each year the class finds widening interests, new responsibilities, new visions, new friends. Step by step the pattern leads on—all part of the process of growing up.

Examining Samples Of Rings



Showing A Movie





JUNIOR CLASS OFFICERS

Josephine Blackburn, secretary; Bob Proctor, president; Mr. Katusa, sponsor; James Pulford, vice president; Robert Cecchini, treasurer

JUNIORS

JUNIOR HOME ROOM 1

- Row 1: M. Pirchesky, president; J. Pulford, vice-president; Mr. Leffard, J. Blackburn, secretary; D. Nurnburger, treasurer
- Row 2: L. Marraccini, C. Conard, B. Affinito, C. Williams, A. Tarr, J. Ball, M. Roule, S. McCarty, P. McFeely
- Row 3: J. Weight, D. Stanko, C. Fawcett, P. Ellwood, H. Bendig, D. Dawson, L. Rostosky
- Row 4: J. Penrod, L. Parkinson, J. Hallam, S. Foertsch, E. Nicholson, R. Williams, S. Lengyel, P. Tesznar
- Row 5: D. Jeffers, W. Gregg, B. Szedon, J. Jarvis, J. Rullo, J. Leach, T. Bartkus, R. Broglie

JUNIOR HOME ROOM 10

- Row 1: B. McNary, president; M. Bissett, vice-president; Miss Vogliotti, C. Wineland, secretary; P. Pala, treasurer; J. Zanardelli, chaplain
- Row 2: L. Loutitt, J. Bidzilla, P. Doty, M. Arnold, M. J. Vogt, N. Koch
- Row 3: B. Harmon, R. Castagna, J. Leach, N. Stokes, J. Kelly, L. Leaver
- Row 4: M. McCurdy, L. Lepro, H. Rubin, P. Gallick, J. Wright, J. Marraccini



JUNIOR HOME ROOM 102

- Row 1: B. Proctor, president; J. Pizzutelli; vice president; B. Weber, secretary; Mrs. Ferello, E. Walker, treasurer; J. Cairns, R. Lauder
- Row 2: J. Dombrowsky, M. J. Thompson, P. Martin, B. Dunn, E. Lee, C. Peters, P. Watson
- Row 3: A. Veada, E. Johnson, F. May, J. Ketcher, L. A. McHugh, J. Langendorf, V. Bendig, J. A. Fine, A. Bugaile
- Row 4: R. Hamilton, M. Moccia, L. Williams, A. Caldwell, B. Charlton, F. Coppi, R. McGrew, R. Loutitt
- Row 5: D. Dyer, C. Byers, B. Dubbs, A. Caseber, C. Bright, G. Chester, D. Forlai
- Absent—P. Morgan, L. Staley



JUNIORS

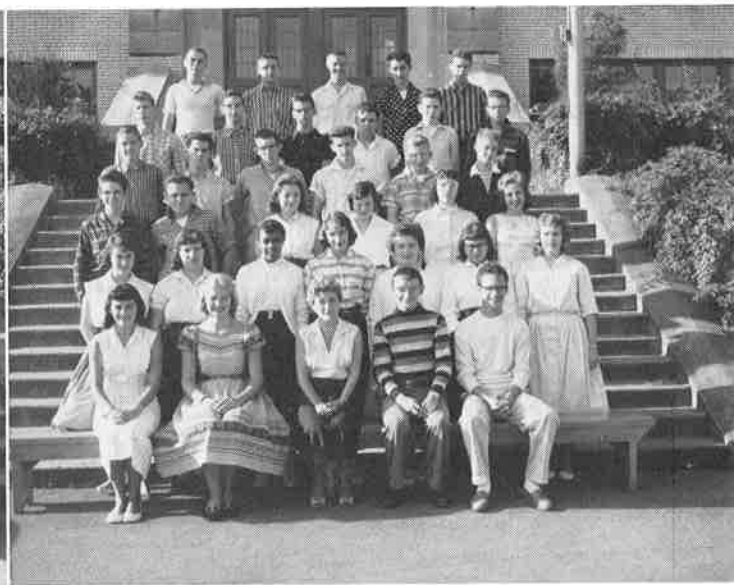
JUNIOR HOME ROOM 110

- Row 1: P. Ziemba, president; P. Neidermeyer, vice-president; B. Mucha, secretary; Miss Stewart, G. Necciai, treasurer; B. Grass, assistant treasurer; J. Bidzila, chaplain
- Row 2: K. Kahle, J. Meyers, P. Makar, I. Martin, M. L. McDonald, F. Welsh
- Row 3: G. Jordan, J. Murphy, L. Rocca, R. M. Maties, V. Fawcett, J. Rice, W. Hillman
- Row 4: B. Restelli, C. Anderson, G. Neff, G. Radus, L. Weber, S. Mavrovich
- Row 5: K. Amoroso, M. Magee, V. Malena, L. Matus, W. Hyatt, R. Traversari
- Row 6: R. Lindley, N. Rider, P. Klein, A. Dunch, J. Pellegrini, L. Putnak, G. Fine



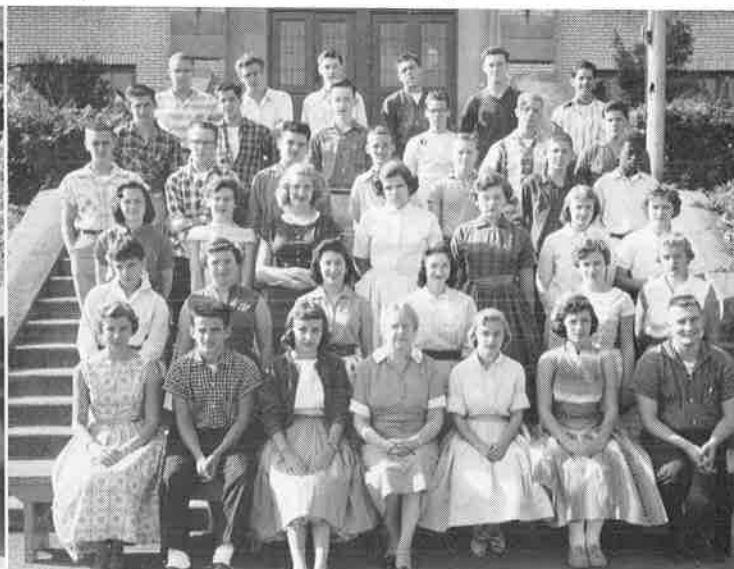
JUNIOR HOME ROOM 201

- Row 1: S. Reinhart, president; J. Porter, vice-president; Miss Robertson, F. Dejeet, secretary; R. Cecchini, treasurer
- Row 2: L. Barkby, B. Vecho, V. Lee, N. J. Patton, B. J. Barle, M. A. Guzanik, B. Lomago
- Row 3: N. Kenny, J. Milton, C. Zanardelli, B. Welch, P. Bindi, J. Rubino
- Row 4: L. Villers, G. Carr, R. Smith, G. Secrist, J. Penrod, R. Kelley
- Row 5: J. Barnett, J. Dudas, J. Sweeney, P. Tragone, T. McGrail, J. Kozon
- Row 6: L. Seigman, B. Hill, L. Amati, J. Silvagni, S. Sloan





Row 1: R. A. Moore, president; M. E. Hough, vice-president; Mrs. Furnier, R. Martino, secretary; R. Perry, treasurer; D. Inks, chaplain
 Row 2: P. Kopp, F. Herrington, K. Michalic, D. Sickenberger, S. Wynn, S. Flaherty, L. Curcio, V. Curdie
 Row 3: K. McVicker, B. Fawcett, M. Noble, D. Stephenson, J. A. Agostoni, P. Gamble, P. Farren, C. Boros
 Row 4: J. Robertson, T. Garbart, J. Vande Water, J. Wiliuszus, R. Reaney, G. Blair, G. Hommey, R. Marraccini
 Row 5: J. Kirschner, G. Jenkins, S. Schreiner, P. Rusin, F. Lomago, W. Schwirian, E. Zewe, C. Cushey



Row 1: N. Keenan, president; R. Venanzi vice-president; M. Vickers, secretary; Miss Sharpnack, B. Thomas, treasurer; S. Davis, J. Frye
 Row 2: M. Louttit, T. Seigman, J. Appolonia, S. Smith, S. Ben-net, M. Rinne
 Row 3: C. Myers, M. Doenges, S. Hunter, M. Leaver, M. Agos-toni, M. J. Moore, E. Freycenet
 Row 4: R. Caster, C. Eisiminger, G. Ballein, W. Cox, D. Shade, J. Aulicino, E. Smith
 Row 5: F. Columbus, R. Gatto, R. Hancock, G. Sweeney, J. Cor-win, B. Porter
 Row 6: D. Lenart, E. Devey, S. Smith, L. Pritchard, H. Lusk, D. Lutes

JUNIORS

Mr. Barbero And Physics Class



"I Know The Answer!"



SOPHOMORE CLASS OFFICERS

Ralph Affinito, secretary; Frank Spornak, president; Mr. Razzano, sponsor; Terry Odelli, vice president; Judy Altomari, treasurer.



SOPHOMORES

Keith To a wonderful, wonderful boy. Thanks for all the Algebra tips in the study hall. They sure make in handy. Keep that wonderful personality. You are lucky to have you in your next class. Love & luck

SOPHOMORE HOME ROOM 103

- Row 1: F. Spornak, president; C. Garvin, vice president; Miss Nuss, J. Dornan, secretary; J. Henson, treasurer
 Row 2: S. McDowell, M. Oates, D. Isaac, E. Guydan, D. Miller, J. Banahasky, C. Chada, L. Burnworth, S. Bugaile
 Row 3: D. Pergola, J. Michalic, K. Zeletski, P. Turko, S. Rostcheck, M. Deffobis, D. Simpson, A. Rizzi
 Row 4: H. Miller, R. Leyda, J. Bonacci, D. Leach, J. Shurgot, J. Rainey, G. Baxter, R. Ford
 Row 5: R. Dewar, G. Moss, J. Cannon, A. Bartek, D. Thornley, R. Hemmings, R. Patterson
 Row 6: N. Mancini, B. Breza, J. Bogdan, D. Bowen, J. Zelinski, L. Kevech

SOPHOMORE HOME ROOM 109

- Row 1: R. Farquhar, president; T. Odelli, vice president; J. Keally, secretary; J. Leach, treasurer
 Row 2: S. L. Balogh, S. L. Vancik, B. Lewis, C. Jones, M. A. Bove, R. Jarvis, D. Herbert, J. Bobnar
 Row 3: J. Neal, M. Greyshock, C. Hodgson, V. Ashcraft, G. Milligan, P. Nosalik, C. Comer, L. Johnson
 Row 4: S. Engle, K. Blankenbuehler, K. DeSantis, W. Wietnykowski, C. Vigliotti, K. Pianetti, A. Rinchetti
 Row 5: G. Marraccini, J. Kustron, A. Mastroianni, N. Bartek, J. Spate, R. Bushmire, W. Johnson
 Row 6: A. Milliern, T. Heasley, K. Young, C. Benedict, R. Johnson, C. Hodgson, H. Barnes





SOPHOMORE HOME ROOM 203

Row 1: T. Law, president; C. Marini, vice president; Mr. Barclay, R. Affinito, secretary; S. Kirby, treasurer
 Row 2: R. Hartman, S. Grady, C. Flokas, J. Dupay, C. Wall, P. Connell
 Row 3: J. Geltz, V. Kissel, J. LaCava, J. Ostrowski, L. Sowers, P. Godwin
 Row 4: J. Mutschler, J. Ferda, S. Cash, L. Keenan, E. Pirchesky, J. Peters
 Row 5: R. Furiga, R. Wickerham, K. Lusk, D. Ghilani, J. Bozic, J. Clair
 Absent: K. Ruedy, R. Jackson, F. Gorandy, M. A. Seaman, A. Rotta, W. Stech, J. Harrison, D. Hoberstock



SOPHOMORE HOME ROOM 204

Row 1: T. Gregor, president; M. Frank, vice president; Mrs. Tucker, J. Altomari, treasurer
 Row 2: S. Magee, D. Wood, J. Guzi, B. McClintoch, J. Donaldson, A. Locke
 Row 3: J. Bedogne, L. Tosi, J. Smith, M. A. Ostovich, V. Walker, R. Schallengerger, R. Grusofsky, R. Murray
 Row 4: J. Anders, B. Rosati, A. Sanfilippo, D. Hoffman, L. Cedar, L. Drechsler, J. Crawford, J. Millinger, secretary—absent

SOPHOMORES

SOPHOMORE HOME ROOM 205

Row 1: E. Inks, president; B. Dolinar, vice-president; Mr. Kahle, M. Cushey, secretary; C. Krempasky, treasurer; M. Louttit, chaplain
 Row 2: P. Sheets, A. VanKirk, C. Lusk, L. Day, M. Huttig, B. Haywood, M. Butti
 Row 3: M. Dorazio, D. Margoni, J. Barton, F. Frye, K. Farren, J. Mele
 Row 4: E. Ellis, J. Schock, T. Trunzo, E. Cooper, R. Micenko, J. Young

SOPHOMORE HOME ROOM 206

Row 1: M. Tomko, president; M. Bartoletti, vice-president, Mr. Kipp, B. Visnich, secretary
 Row 2: H. Hansen, B. Baird, M. Yanachik, N. Frye, J. Schock, S. Fusco, J. Mellor, F. Pohle
 Row 3: A. Recaldini, G. Rabe, P. Columbus, C. Sloan, B. Burke, C. Bedogne, C. Bednar, B. Craig, B. Bauer
 Row 4: L. Frye, C. Weber, J. Brogan, M. Criswell, D. Duvall, B. Timko, D. Mayes, R. Kenward
 Row 5: D. McGrew, J. Malloy, D. Hamilton, C. LaFronte, G. Simmons, P. Loines, T. Frola, R. Armstrong, P. Avdoshenko
 Absent J. Jones





SOPHOMORE HOME ROOM 207

- Row 1: J. Miller, president; S. Palmer, vice president; B. Coleman, secretary; Miss Irwin, N. Koch, R. Sanders, treasurer; W. Namie
- Row 2: K. Silko, B. Dale, C. Tirpak, D. Veltori, L. Holzaphel, D. Freycenet, V. Harsh, C. Komperta
- Row 3: E. Scott, C. Sofsky, J. Tempest, C. Berwick, C. Nurnberger, M. Branttey, C. Hull, R. Herman
- Row 4: H. Eisiminger, P. McChesney, D. Nood, J. McIntoch, J. Lucas, J. Hommey, R. VanKirk, W. Foertsch, P. Kruppa
- Row 5: E. Jackson, J. Williams, J. Coleman, R. Leach, R. Hatfield, J. Zakowski, W. Neidermeyer



SOPHOMORE HOME ROOM 209

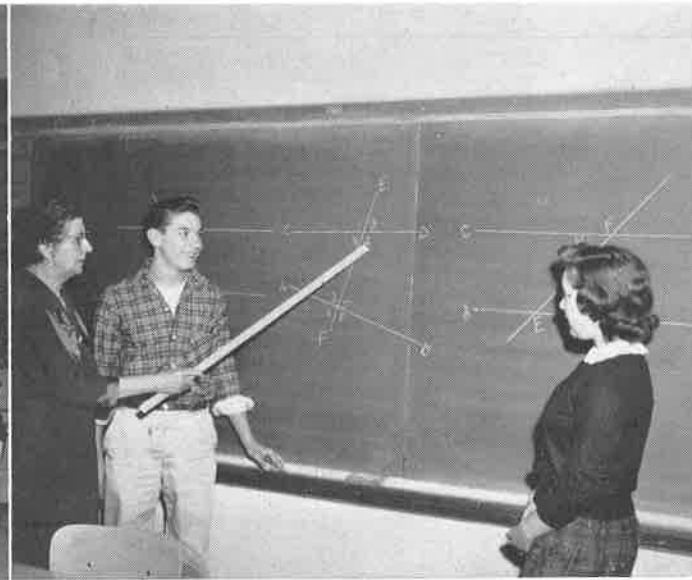
- Row 1: C. Cominsky, president; J. Bizarka, vice president; H. Bozic, secretary; A. Forsyth, treasurer
- Row 2: C. Holn, C. Phillips, D. Baker, M. Phillips, G. Cutright, S. Samson, L. Reale, M. A. Grodecour, P. Thompson
- Row 3: E. Pager, B. Hillman, S. Wilson, F. Stafford, M. L. Simmons, J. Gallagher, M. Morgan, J. A. Jackson
- Row 4: D. Taylor, T. Devore, E. Nuzzaci, J. Stoner, S. Fusco, R. Hahn, T. Grundi
- Row 5: J. Ladler, B. Williams, G. Green, H. Day, D. DeMedio, L. Garrett
- Row 6: R. Golomb, B. Malena, M. Colucci, B. Hoskins, R. Walters, D. Martello, W. Furlong
- Absent J. Kirkpatrick

SOPHOMORES

HOME ROOM 202

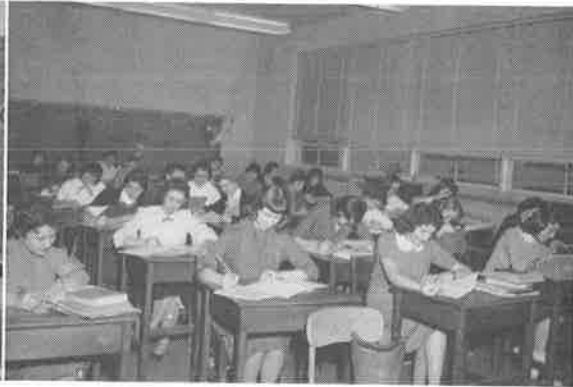
- Row 1: P. Bavuso, J. DeCroix, J. O'Neil, president; B. Baron, vice president; Mr. Katusa, C. Rodgers, secretary; C. Lenzi, treasurer; C. Nagy, G. Guarinoni
- Row 2: P. Brown, R. Hohn, D. Felton, L. Barnett, L. Sadler, K. Agostoni, N. Spate
- Row 3: B. Smail, F. Farren, J. Gadd, C. Posmoga, D. Florko, K. Gunia, B. Tosi
- Row 4: R. Kranz, B. Balliard, J. Kovall, H. Brown, F. Morgan, J. Dannels, J. Cepatis
- Row 5: F. Foster, K. Hugus, A. Christina, J. Bosdosh, D. Sigler, R. Popp, J. Murray
- Absent: W. Milligan, D. Pellegrini, R. Smith, K. Trainor, E. Vickers

Geometry Class





A Recording in French



Bookkeeping Class



Planning A Theme



Dictionary Work



Biology Explanation



Chemistry Experiment



Spanish Study



Latin Poster



History II Class



History III Class



Sewing



Mechanical Drawing



Tracy's Art Show



ACTIVITIES

Activities on a busy intersection of a through highway are many and varied. Buses, trucks, automobiles, pedestrians, business, pleasure, industry, commerce, are all represented. The highway is spacious, branch roads may lead through city or forest; a destination is beyond; a purpose is there. School activities offer a comparable variety to promote growth in talent, interest, leadership, or service. Pleasure and business, music and banking, art and dramatics, all have a place to develop young talent, to teach working together.

ACTIVITIES

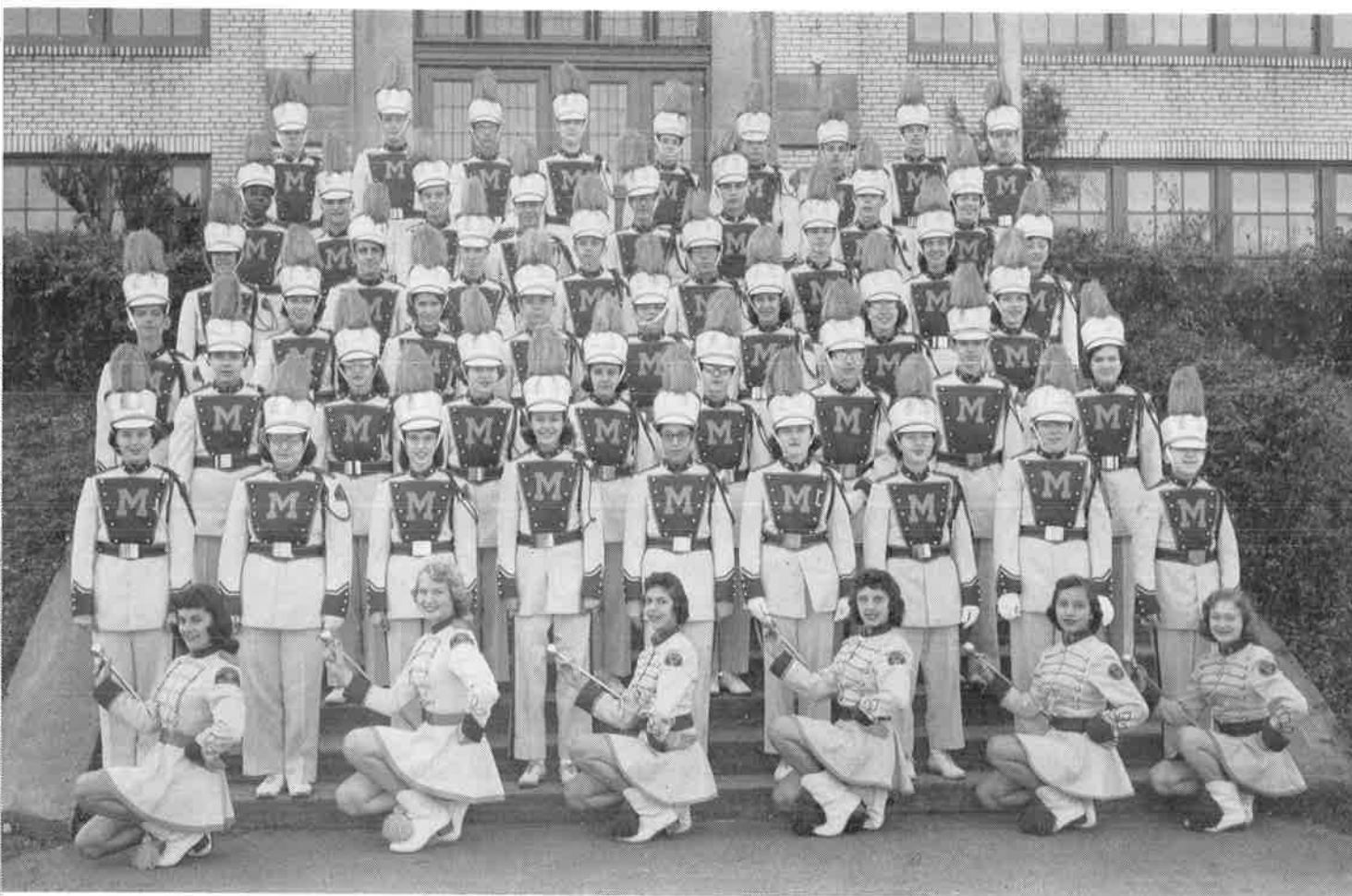
High school students have a wide variety of activities in which they may participate. These are paths that lead to the road of success, whether they are sports clubs, music organizations, services, dramatics, or publications. In them the student meets many interesting people, learns how to work with others, and becomes confident of his own contributions. Field trips, the responsibilities of holding office, contributions to the regular meetings, all provide experience invaluable to the student in later life.

History II Club Packing Toys



Checking Accounts For School Banking





Row 1: S. J. Reinhart, G. Porter, C. Flokas, J. Altomari, M. Frank, C. Philips

Row 2: B. Matthews, J. Bidzila, C. Aley, M. Tomko, S. Palmer, J. Banqhsy, A. Recaldini, M. Louttit, E. Marracini

Row 3: D. Sickeuberger, C. Jones, B. Dale, S. Kirby, D. Margoni, R. Schuster, C. Myers

Row 4: D. Sweeney, P. Palla, J. Leach, R. Williams, J. Young, C. Skinkis, C. Berwick, B. Hamilton

Row 5: M. Hough, R. Sanders, B. Kelly, J. Wiliuszis, S. Cash, R. Dewar, S. Kennell, J. Russell

Row 6: H. Brown, J. Pizzutilli, W. Cox, B. Proctor, B. Cecchini, B. Roule, P. Avdoshanko, K. Sloan

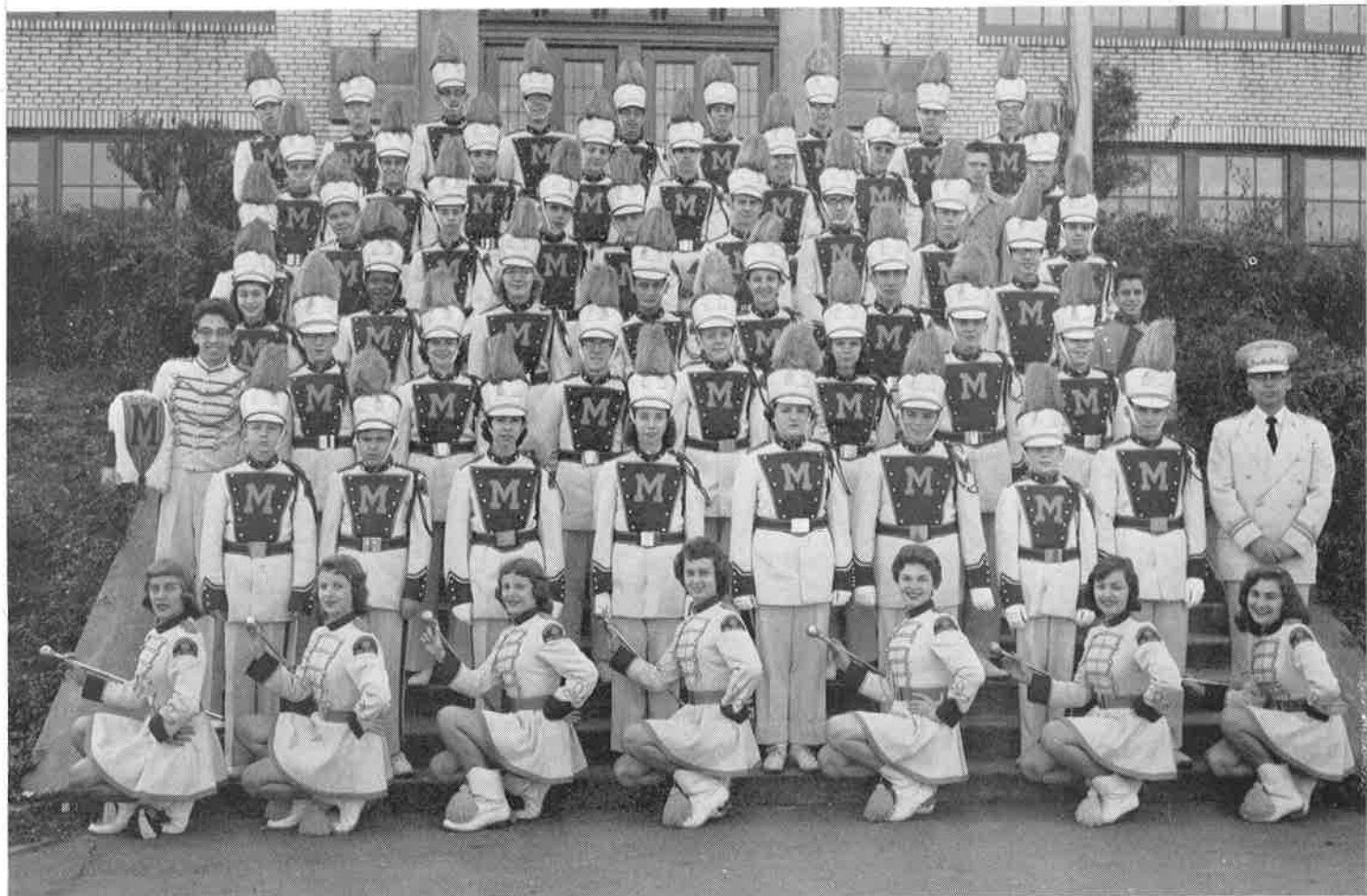
Row 7: K. Young, D. Hoffman, R. Broglie, C. Byers, R. Hamilton, T. Heasley, P. Tesznar, G. Wassel, R. Racunas

COLOR GUARDS

D. Thornley, K. Amorosa, L. Staley



VARSITY BAND



- Row 1: J. Martin, head majorette; R. A. Moore, M. J. Moore, M. Ellis, M. L. Hoff, L. Gayhart, P. Boal
- Row 2: J. Bell, S. Kohout, J. Geltz, J. Keally, C. Silko, J. Appolonia, D. Swanson, R. Venanzi, Mr. G. Watkinson
- Row 3: A. Sanfillipo, G. Tuttle, M. Oates, K. Farren, D. Greenwood, P. Watson, T. Odelli, P. Klein
- Row 4: F. Herrington, F. May, J. Barton, D. Ghilani, M. Ostovich, H. Rubin, A. Mastroianni, E. Nicholanco
- Row 5: L. Villers, J. Leach, S. Sloan, A. Caseber, L. Williams, P. Simpson, W. Dainty, B. Rosati
- Row 6: E. Inks, M. Ferrari, W. Oates, K. Itugus, G. Necciai, W. Spohn, P. Young, E. Walker, G. Chester
- Row 7: R. Plymire, L. Lepro, P. Klive, J. Bellecini, D. Burya, D. Yerkey, A. Dunch, D. Dyer

WILDCAT

James Pulford

VARSIITY BAND





GIRLS' ENSEMBLE

Row 1: S. Holmes, K. McVicker, C. Marini, F. Herrington, accompanist; L. A. McHugh, V. Gregory
 Row 2: B. Tosi, N. Keenan, J. Blackburn, C. Wineland, J. Bidzila
 Row 3: C. Long, D. Jenkins, M. Olexa, S. Robison
 Absent: B. Baird



GIRLS' CHORUS

Row 1: B. Grass, P. Bavuso, M. G. Louttit, C. Peters, E. Smith, D. Herbert
 Row 2: S. Bennett, J. Donaldson, S. Davis, F. Welsh, M. Arnold
 Row 3: M. Doenges, W. Hillman, F. Farren, J. Rice, S. Hunter, J. LaCava
 Additional girls added:
 B. Burke, L. Burnworth, J. Gallagher, S. Grady, M. Huttig, C. Lusk, B. McClintock, S. Sampler, J. Schock, B. Smail, N. Spate, D. Vettori, K. Zelitski

SCHOOL CHOIR

Row 1: M. Pirchesky, P. Kelly, E. Lee, L. Louttit, J. Briscoe, R. McFarland, L. A. McHugh, V. Gregory, F. Herrington, F. Weight
 Row 2: C. Long, J. Bidzila, A. VanKirk, C. Patterson, S. Wynn, B. Lyda, J. Shurgot, J. Rainey, P. Doty, R. Lauder
 Row 3: C. Wineland, J. Blackburn, S. Holmes, V. Lee, T. Robertson, G. Jenkins, E. Smith, J. Stoffel, B. Baird
 Row 4: K. McVicker, M. Bartoletti, A. Forsyth, A. Veda, F. Spornak, G. Simmons, J. Leach, E. Johnson, N. Koch
 Row 5: C. Boros, J. Roberts, M. Rosensteel, R. Marracini, J. Jenkins, B. Coleman, R. Farquhar, N. Keenan
 Row 6: B. Mower, D. DeMedio, G. Mellinger, H. Green, A. Rotta, T. McGrail, J. Leach, B. Cecchini

BEL CANTO CLUB

Row 1: J. Dornan, C. Wall, M. Guzanick, B. Smail, F. Weight, president; C. Long, vice president; S. Davis, secretary; D. Jenkins, treasurer; D. Isaac, D. Baker, S. Bugaile, L. Reale, J. Blackburn, J. Appolonia, J. Leach, M. L. Simmons, B. J. Craig
 Row 2: P. Hillman, P. Bavuso, J. DeCroix, L. Louttit, E. Lee, P. Nosalik, B. Tosi, S. Wynn, B. Francheshi, B. Dunn, C. Milligan, S. Wall, C. Wineland, J. Zanardelli, V. Curdie, B. Fawcett
 Row 3: S. Holmes, F. Farren, V. Bendig, B. Baird, J. Stoffel, V. Harsh, B. Burke, K. Pianetti, V. Villers, C. Martin, A. Locke, S. McCarty, J. Fine, S. Curdie, M. Arnold
 Row 4: R. Zatorsky, M. McCarty, J. Roberts, M. K. Leeper, R. A. Hartman, D. Hess, D. Spinner, E. Scott, M. Brantley, V. Lee, A. Veda, L. Bartolotta, J. Johnston, C. Gava-ghan, E. Smith
 Row 5: R. Matias, C. Burnworth, D. Hatfield, D. Miller, C. Fusco, B. Welch, L. Johnson, J. Rainey, D. Scott, T. Thompson, J. Briscoe, M. Leaver, K. Locke, P. Brown, D. Freycenet
 Row 6: M. McDonald, J. J. Thompson, P. Doty, S. Tustin, L. Ballinger, J. Myers, J. A. Dupay, A. Bugaile, J. Ostrowski, J. Donaldson, M. Yanachik, B. Hillman, L. Sowers, M. J. Fusco, B. Thomas, F. Crawford
 Row 7: E. Devy, B. Szedon, D. Sampson, C. Geltz, R. Gatto, F. Spornak, E. Smith, T. Robertson, R. McFarland, P. Morgan, J. Langendorf, C. Boros, J. Ketcher, V. Fawcett
 Row 8: L. Amati, J. Kozon, J. Corwin, G. Fine, J. Hallam, G. McMahon, E. Brice, F. James, M. Reed, M. Butti, L. Holzaphel, V. Gregory



TRIO

C. Wineland, N. Keenan, R. Lauder
(Accompanist: J. Dornan)



BAND CLUB

Row 1: J. Geltz, S. Palmer, M. Frank, R. A. Moore, R. Cecchini, president; R. Proctor, vice president; Mr. Watkinson, R. Roule, secretary-treasurer; S. J. Rinehart, C. Phillips, J. Altomari
Row 2: J. Banakasky, M. Oates, B. Dale, A. Recaldini, P. Sheets, J. Martin, M. L. Hoff, T. Flokas, P. Boal, L. Gayhart, M. J. Moore
Row 3: P. Watson, F. Herrington, M. Ellis, J. Porter, M. J. Vickers, B. Hamilton, B. G. Matthews, M. A. Ostovich, M. Louttit, D. Sickenburger
Row 4: W. Cox, J. Young, D. Ghilani, S. Cash, E. Inks, R. Sanders, P. Godwin, C. Sloan, J. Barton
Row 5: R. Kelly, J. Wiliuszis, A. Mastroianni, L. Villers, D. Burya, D. Margoni, T. Odelli, D. Hoffman
Row 6: R. Dewar, J. Leach, R. Williams, J. Bellicini, K. Hugus, B. Rosetti, K. Young
Row 7: P. Simpson, A. Dunch, A. Sanfillipo, M. Ferrari, P. Kline, L. Lepro, D. Yerkey, R. Plymire, G. Necciai





C. Pezzoni, J. A. Pohts, J. McNamee, P. Dannels, F. Pansino, J. Pulford, P. Connell, D. Jenkins, E. Panseri, J. Johnston, G. McMahon, R. O'Hern

"Come on, Mercy, wouldn't you like to tell me about it?"

Ring Around Elizabeth

The annual Senior Class Play, "Ring Around Elizabeth," was presented on March 20 and 21. It was a three act comedy written by Charl Armstrong and directed by Miss Madeline Boyland.

The plot concerned what happened to her modern American family and friends when Elizabeth Cherry inherited a \$15,000 legacy from her rich aunt. Elizabeth was the center of an irritating household. Her husband was a dullard; one of her daughters was in love with a playboy and the other was very grown-up. Elizabeth, because of her many troubles, developed a case of amnesia, in which twenty years of her life were blotted out and she was a girl again. While suffering from amnesia, Elizabeth unleashed all the pent-up frustrations inflicted by her careless family and began putting them in their places.

Somewhere along the way Elizabeth regained her memory, but not before all of the family shortcomings were remedied.

The efficient stage crew and publicity staff contributed much to making the play a success.

Cast of Characters

Laurette Carpenter Styles—Charlene Pezzoni
Hubert Cherry—Glenn Mahn
Mercedes—Joan Johnston
Vida—Patricia Connell
Jennifer—Jane McNamee
Elizabeth Cherry—Elaine Panseri
Irene Oliver—Regina O'Hern
Harriet Gilpin—Jo Ann Pohts
Ralph Cherry—Frank Pansino
Andy Blayne—James Pulford
Mrs. Charles—Dorothy Jenkins
Dr. Hollister—Paula Dannels

Proper Application of Make-up



Back Stage Work





SIGHT UNSEEN

Seated: C. Pezzoni, G. McMahon, R. O'Hern, B. Dunn

Standing: J. McNamee, F. Pansino, N. Keenan, J. Pulford, E. Panseri, P. Connell

SIGHT UNSEEN

CAST OF CHARACTERS

Etta—Patricia Connell
 Miss Potter—Jane McNamee
 Archibald Andrews—Frank Pansino
 Lady Judith Elliot—Nancy Keenan
 Mrs. Millicent Malone—Elaine Panseri
 Henry Malone—James Pulford
 Mat—Charlene Pezzoni
 Lady Hortense Elliot—Regina O'Hern
 Brigadier General Sir Thomas Elliot—Glenn McMahon
 Lady Penelope Elliot—Bonnie Dunn

Sight Unseen, a three-act comedy by Rosemary Porter and Warner Law, was presented in the school auditorium on November 14 under the direction of Miss Madeline Boyland. The all-class play was produced by a special arrangement with Samuel French.

The cast, consisting of seven seniors and three juniors, presented excellent acting and characterization. The stage crew did a very good job on the setting, even to the making of a suit of armor.

The setting of the play was present-day at Barnslay Castle, a sixty-room haunted manor house in England. Judith Elliot, owner of Barnslay, wanted to sell the castle to Mrs. Malone, a wealthy American. Much hilarity was caused by the ghosts who tried to discourage Mrs. Malone from buying the castle.

STAGE CREW

K. Amoroso, K. Louttit, E. Marraccini, L. Staley, J. Bozic, C. Sloan, B. Barkey, B. Oates





CHEMISTRY

- Row 1: C. Long, J. Johnston, F. Dirling, president; J. Gerboc, vice president; Mr. Kahle, M. Gregory, secretary; D. Pender, treasurer; J. Immel
- Row 2: K. Ward, N. Mountain, J. DeiCas, P. Connell, L. Bartolotta, D. Yerkey, R. Roule, R. Plymire
- Row 3: K. Ford, J. Foytik, G. Jones, B. Cree, R. Guydan, D. Sampson
- Row 4: G. Wassel, E. Yohe, S. Parish, J. Bellicini, T. Hoon, C. Geltz, M. Leco



BIOLOGY CLUB

- Row 1: A. Rizzi, B. Grass, J. Miller, president; M. Noble, vice president; Mr. Kipp, N. Keenan, secretary; K. Blankenbuehler, treasurer; R. Hansen, M. France
- Row 2: R. Farquhar, S. McDowell, K. Silko, J. Bidzilla, M. Deffobis, C. Chadda, D. Herbert, M. Connell, J. Pieczarka
- Row 3: J. Crawford, J. Brogan, T. Devor, S. Wilson, C. Bednar, P. Papa, M. Bartoletti, D. Felton
- Row 4: B. Shuster, D. Pergola, G. Moss, B. Breza, C. Rodgers, E. Nuzzaci, R. Golomb, J. Bogdan

GOING TO COLLEGE CLUB

- Row 1: J. McNamee, C. Pezzoni, president; C. Mamie, vice president; Mr. Davis, J. Affinito, secretary; C. Geltz, treasurer; D. Panseri
- Row 2: J. DeiCas, R. O'Hern, M. Roule, K. Podesta, L. Bartolotta, J. Pohts, P. Connell
- Row 3: B. Ellsworth, F. Pansino, S. Dragone, C. Mele, J. Gandley, G. Sheperd
- Row 4: M. Leco, S. Parish, F. Dirling, R. Saunders, J. Frye, K. Louttit

COMMERCIAL GOING TO COLLEGE CLUB

- Row 1: K. White, president; M. Ellis, vice president; Mr. Davis, E. Panseri, secretary; M. Skutko, treasurer
- Row 2: R. Bindi, E. Tesznar, L. Gayhart
- Absent: P. Davis





DEMO CLUB

- Row 1: M. Pesognelli, R. Jonas, B. Williams, J. Gandley, president; Mr. Ermlick, M. Petrosky, treasurer; J. Ellis, vice president, C. Aley
- Row 2: S. Dragone, C. Pezzoni, S. Kennell, J. Jeffers, J. McNamee, L. Rostcheck, C. Mamie, J. Affinito
- Row 3: R. O'Hern, K. Mele, B. G. Matthews, P. Valiani, V. Gregory, S. Holmes, P. Dannels, M. Papak, G. Sheperd
- Row 4: W. Leach, J. Martin, M. A. Sewchok, K. Louttit, G. McFeeley, M. Ferrari, F. Pansino
- Absent: J. Kirshner, secretary



SIGMA RHO DELTA

- Row 1: S. Davis, J. Pulford, president; R. Proctor, vice president; Mr. Katusa, Mr. Fleming, J. Pizzutelli, treasurer; M. Magee, clerk; J. Bidzila
- Row 2: M. Roule, F. May, B. Affinito, N. Keenan, L. A. McHugh, D. Sickenberger, P. Bindi, M. E. Hough, K. McVicker
- Row 3: L. Rostosky, D. Dawson, C. Conard, B. McNary, R. Lauder, M. Rinne, N. Koch, L. Rocca, M. Elwood
- Row 4: R. Reany, R. Weber, P. Gallick, W. Cox, M. Pirchesky, J. Penrod, E. Nicholanca
- Row 5: J. Wiliuszis, F. Dejeet, H. Rubin
- Absent: J. Blackburn, secretary

HISTORY II CLUB

- Row 1: D. Isaac, P. Thompson, G. Guarinoni, K. Silko, treasurer; B. Haywood, clerk; Mr. Hornack, B. Visnich, secretary; F. Spornak, president; T. Odelli, vice president; J. Pieczarka
- Row 2: C. Bedogne, C. Lusk, C. Chada, C. Gunia, D. Felton, K. Krempaski, C. Marini, C. Wall, M. Grodecour
- Row 3: M. France, J. Neel, P. McChesney, J. Jackson, J. Bedogne, C. Hedgson, S. Engel, C. Garvin
- Row 4: K. Young, C. Benedict, J. Kustron, J. Malloy, R. Walters, B. Sanders, D. DeMedio, T. Devore, D. Taylor

HISTORY II CLUB

- Row 1: A. VanKirk, R. Jarvis, B. Malena, president; L. Tosi, vice president; Miss Burke, M. Tomko, secretary; A. Sanfilippo, treasurer; B. Lewis, clerk; D. Herbert
- Row 2: B. Coleman, M. Deffobis, L. Reale, J. Donaldson, M. Louttit, B. Bauer, C. Jones, C. Posmoga, E. Guydan
- Row 3: M. Bartoletti, R. Herman, M. Connell, A. Rinchetti, J. Leach, C. Bedner, R. Farquhar, J. Forsyth, J. Gadd
- Row 4: M. Dorazio, J. Stoner, J. Henson, N. Koch, E. Pirchesky, J. Peters, K. Blankenbuehler, G. Marraccini
- Row 5: J. Miller, G. Moss, B. Rosati, J. Shurgot, E. Nuzzaci, R. Golomb





LATIN II CLUB

Row 1: A. VanKirk, G. Marracini, M. A. Grodecour, co-councils; Miss Irwin, B. Coleman, secretary; J. Leach, treasurer; M. Tomko
 Row 2: F. Stafford, A. J. Forsyth, K. Gunia, B. Lewis, J. Kelly, S. Engel
 Row 3: J. Gadd, M. E. Hough, A. Rinchetti, C. Hohn, C. Benedict

FRENCH II CLUB

Row 1: J. Johnston, B. Williams, J. Gandle, president; R. O'Hern, vice president; Miss Sweeney, L. Bartolotta, secretary; R. Saunders, treasurer
 Row 2: M. Papak, G. Sheperd, N. Mountain, P. Connell, C. McGuffie, C. Long, C. Mamie, J. Affinito
 Row 3: C. Gavaghan, M. E. Petras, C. Geltz, C. Leggon, J. Foytik, D. Sampson

FRENCH I

Row 1: J. Bidzila, B. McNary, R. Lauder, president; J. Pulford, vice president; Miss Sweeney, B. Barle, secretary; B. Weber, treasurer; L. Rocco, B. Affinito, K. Kahl
 Row 2: C. Zanardelli, S. Hunter, K. Fawcett, J. Dombrowsky, F. May, L. Rostosky, P. Elwood, L. McHugh, G. Jordon, D. Dawson
 Row 3: L. Lepro, H. Rubin, M. Moccia, M. Pirchesky, S. Foertsch, J. Barnett, N. Koch, M. Vogt
 Row 4: J. Bartkus, T. McGrail, R. Reaney, R. Castor, M. Magee, P. Gallick





ENGLISH CLUB

- Row 1: B. Smail, J. DeCroix, P. Tragone, president; J. O'Neill, vice president; Mr. Razzano, J. Ostrowski, secretary; M. Vickers, treasurer; C. Phillips, J. Altomari
- Row 2: C. Marini, M. Sheets, J. Banahasky, M. Bove, S. Grady, S. Smith, A. Recaldini, C. Milligan, S. Sampler, M. Frank, S. Palmer
- Row 3: D. Stephenson, M. Noble, B. Dale, M. Oates, M. Butti, M. Yanashik, C. Nagy, P. Nosalik, S. Bugaile, J. Geltz, S. Kirby
- Row 4: J. Dupay, J. Barton, B. Hillman, V. Harsh, B. Burke, K. Pianetti, C. Flokas, N. Patton, K. Michalic, J. Keally
- Row 5: K. Zeletski, J. Kirpatrick, F. Stafford, L. Barnett, M. Cushey, K. Sloan, M. Greyshock, M. Morgan, C. Nurnberger, M. Simmons.
- Row 6: R. Bushmire, J. Crawford, E. Inks, J. Young, K. Ferren, L. Garrett, A. Martroianni, S. Lengyel, J. Mele
- Row 7: B. Hill, F. Columbus, R. Traverseri, F. Lomago, D. Martello, G. Vandewater, D. Ghilani, C. Weber, S. Cash
- Row 8: M. Criswell, A. Haletsky, J. Silvagni, P. Neidermeyer, G. Necciai, R. Gatto, J. Marraccini, G. Ballein, K. Lusk
- Row 9: B. Hoskin, K. Miller, A. Rottia, O. Dickey, J. Bozic

SPANISH CLUB

- Row 1: N. Frye, J. Pizzutelli, president; A. Haletsky, vice president; Mrs. Tucker, K. McVicker, secretary; E. Nicholanco, treasurer; C. Conrad
- Row 2: S. Kirby, P. Columbus, C. Tirpak, M. Rinnie, P. Bindi, L. Curcio, C. Myers
- Row 3: R. Marraccini, R. Venanzi, C. Anderson, J. Radus, J. Penrod, F. Dejeet, J. Penrod
- Row 4: L. Pritchard, P. Tragone, J. Marraccini, L. Weber, J. Jarvis, R. Lindley, D. Inks, G. Ballein

DRAMATICS CLUB

- Row 1: B. Dunn, president; P. Ferrer, vice president; B. Francheski, secretary; M. A. Guzanick, treasurer
- Row 2: J. Roberts, M. Leeper, P. Bauvso, R. Matias, F. Welsh





USHERETTES

- Row 1: K. Locke, head usherette; N. Tuscano, president; J. Affinito, vice president; Miss Sweeney, M. L. Borrello, secretary; B. Christina, treasurer; R. A. Hemmings, head usherette
- Row 2: C. Conard, J. Dombrowsky, K. Fawcett, G. Bidzila, V. Curdie, J. McNamee, E. Panzeri, A. Perunko
- Row 3: C. Mamie, V. Bendig, B. Affinito, F. Stafford, L. Sowers
- Row 4: K. Kahle, P. Elwood, J. Gadd, L. Curcio, C. Marini, R. Farquhar, M. Cushey, L. Barnett, A. Locke, C. Posmoga, E. Guydan



SERVETTES

- Row 1: N. Frye, J. Bobnar, K. Taylor, C. Gavaghan, president; Miss Vogliotti, V. Walker, J. Guzi, J. Gallagher, S. Vancik
- Row 2: V. Fawcett, C. Myers, P. Columbus, B. Baird, C. Tirkpak, P. Morgan, J. Pohts, B. Grass
- Row 3: S. Rostcheck, B. Fawcett, S. Robinson, P. Mancini, R. Zatorsky, J. Roberts, G. Agostoni, N. Spate
- Absent: N. Caldwell, vice president; M. Huttig, secretary; M. Huttig, treasurer

LIBRARY CLUB

- Row 1: G. Agostoni, R. M. Martino, P. Dannels, president; P. Ziemba, vice president; Miss Hardy, S. Flaherty, secretary; S. L. Vancik, treasurer; P. Bartko
- Row 2: T. Marraccini, J. Gallagher, C. A. Comer, A. Tarr, W. Hillman, S. Rostcheck, V. Walker, E. Tesznar
- Row 3: J. Agostoni, D. Wood, S. L. Balogh, M. Phillips, R. Jarvis, P. McFeely, G. Ashcraft, G. Cutright





TRI-HI-Y CLUB

- Row 1: S. Smith, N. Caldwell, president; L. Lees, vice president; Miss Robertson, Miss Nuss, J. Ball, secretary; I. Martin, P. Makar
 Row 2: C. Gavaghan, P. Mancini, W. Robson, M. Prentice, B. Mucha, J. Rubino, J. Williams, B. Murray
 Row 3: C. Skinkis, C. Patterson, G. Rabe, N. Campbell, J. Adametz, S. Robison, N. Mountain
 Absent: M. Huttig, treasurer



HI-Y CLUB

- Row 1: L. Johnson, J. Dudas, president; J. Rainey, vice president; Mr. Neill, K. Hugus, secretary; J. Coleman, treasurer; E. Cooper, chaplain
 Row 2: E. Ellis, T. Trunzo, L. Villars, B. Kelly, E. Jackson, M. Colucci, J. Mutschler
 Row 3: C. Rogers, T. Thompson, H. Green, J. Koval, D. Hoffman

STUDENT COUNCIL

- Row 1: M. Ferrari, president; C. Pezzoni, vice president; Mr. Davis, sponsor; G. Sheperd, secretary; S. Marra, treasurer
 Row 2: C. Marini, R. Farquhar, C. Mamie, B. Barle, P. Ziemba, M. Tomko, J. Keally, N. Keenan, S. Reinhart, B. McNary, R. Moore
 Row 3: J. Pulford, M. Pirchesky, T. Odelli, H. Rubin, F. Pansino, A. Dunch, J. Miller
 Row 4: J. O'Neil, T. Gregor, R. Malena, A. Sanfilippo, E. Inks, R. Proctor
 Row 5: J. Gerbec, R. Cominsky, J. Ellis, M. Petrosky, K. Wood





FUTURE TEACHERS OF AMERICA

- Row 1: B. Williams, W. Spohn, president; R. Bindi, vice president; Mr. Rutledge, L. Rostcheck, secretary; M. J. Gibson, treasurer; N. C. Tuscano
- Row 2: S. Kennell, L. Rizzi, J. Jeffers, M. Pesognelli, R. Jonas, K. White, J. Johnston
- Row 3: P. Valiani, M. Gregory, B. Williams, B. Christina, E. Panseri, M. Olexa

SENIOR SECRETARIES

- Row 1: M. A. Pohle, C. Shemo, P. Hillman, E. Tesznar, Miss Robertson, N. C. Tuscano, L. Rizzi, C. Wall, L. Williams, R. Ambrose, M. Dawson
- Row 2: D. Spinner, N. Zenobi, M. K. Leeper, B. Williams, M. Olexa, M. Pesognelli, B. Schuster, J. Martin, M. Martino
- Row 3: R. A. Hemmings, B. Christina, V. Villers, M. Baxter, B. Hamilton, R. Campbell, S. Robison, J. Jeffers, L. Rostcheck
- Row 4: M. Borrello, C. Pezzoni, M. Ellis, L. Gayhart, E. Panseri, K. White, B. Murray, C. Martin
- Row 5: K. Locke, C. Skinkis, D. Hatfield, H. Wynn, D. Scott
- Absent: R. Bindi, P. Davis, E. Freyenet, M. Mellor

COMMERCIAL CLUB

- Row 1: P. Ziemba, L. Marraccini, R. M. Mautino, R. M. Ambrose, secretary; M. J. Gibson, president; Mrs. Becker, C. Shemo, vice president; S. Fusco, J. Meyers, N. Rose
- Row 2: D. Miller, G. J. Porter, S. J. Reinhart, B. J. Barle, H. Bendig, T. Seighman, L. Rizzi, B. Williams
- Row 3: L. Lees, B. Murray, I. A. Williams, B. Hamilton, J. Zanardelli, J. Appolonia, J. A. Drechsler, M. J. Fusco
- Row 4: J. Langendorf, J. Ketcher, C. Boros, M. Leaver, N. Zenobi, C. Martin, G. Cutright, K. Locke
- Row 5: B. Lomago, M. Martino, M. Dawson, M. A. Pohle, R. Campbell, A. Bugaile, J. A. Adametz, S. Flarerty
- Absent: Verna Villers, treasurer





DRIVING CLUB

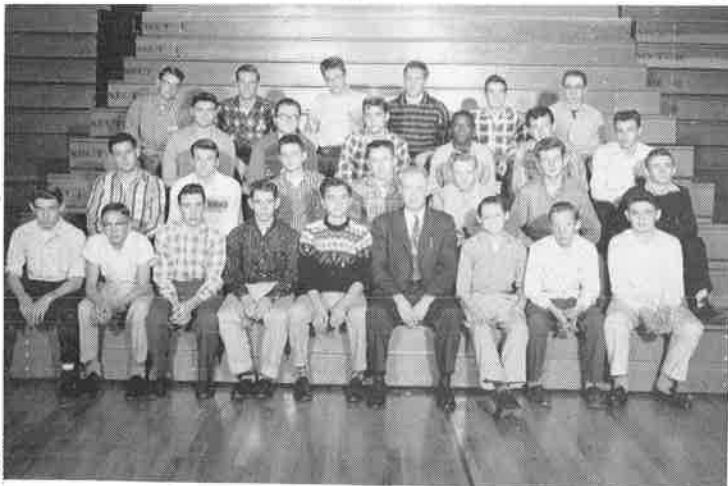
- Row 1: S. Tustin, J. Frye, president; N. Campbell, vice president; Mr. Barkley, G. Chester, secretary; E. Walker, treasurer; J. Ball, J. Dickman
 Row 2: P. Bartko, M. McCarty, J. Stoffel, M. Prentice, C. S. Wall, D. Hatfield, P. Watson, C. Wineland
 Row 3: C. Eckels, M. Devore, B. Vecho, S. Hunter, D. Stanko, C. Zanardelli, L. Ballinger
 Row 4: W. Furlong, J. Shack, S. Schruner, J. Hommey, M. Moccia, B. Porter, R. Castner
 Row 5: C. Campbell, D. Dyer, G. Sweeney, J. Secrist, R. Hancock, L. Amati, J. Kozon

CHEFS' CLUB

- Row 1: J. Rongaus, president; P. Young, vice president; Miss Vogliotti, K. Wood, secretary; H. Rubin, treasurer
 Row 2: J. Aulcino, B. Bonacci, J. Michalis, R. Traversari, J. Salvagni, M. Pirchesky, E. Weaver
 Row 3: J. Segursky, J. Bobnar, H. Green, G. Chester, B. Charlton, K. Ward

Chefs' Club Ready to Cook





ARCHERY

Row 1: J. McIntosh, K. Rudy, B. VanKirk, L. Tosi, Mr. Neil, J. Neil, F. Poll, J. Lucas
 Row 2: J. Jones, N. Bartek, D. McGrew, K. Kenward, J. Hommey, E. Mellon, G. McFeeley
 Row 3: G. Baxter, R. Wickerham, K. Ballard, H. Brown, P. Neidermyer, D. Martello
 Row 4: D. Dyer, B. Cree, G. Jones, B. Haines, C. Bright, L. Seighman
 Absent: C. Nagy, president; E. Tirpack, vice president; E. Fabin, secretary; J. Kirschner, treasurer



SENIOR SPORTSMEN CLUB

Row 1: R. Hunter, president; R. Cominsky, vice president; C. Newman, Mr. Barbero, C. Leggon, secretary; M. Kriston, treasurer, T. Tolliver
 Row 2: R. Racunas, T. Criswell, P. Hoosac, M. Bove, E. Mellon
 Row 3: V. Momeyer, J. Koval, J. Timko

G. A. L.

Row 1: S. Wilson, assistant secretary; A. Veada, L. Williams, president; M. J. Vogt, vice president; Miss Nevin, D. Jenkins, secretary; J. Briscoe, treasurer; M. A. Ostovich, M. A. Seaman
 Row 2: S. McDowell, D. Vettori, N. Spate, K. Agostoni, L. Sadler, B. Thomas, D. Scott
 Row 3: C. Skinkis, S. Patterson, W. Robson, F. Frye, G. Sofsky, V. Kissel, S. Magee





BOYS' ATHLETIC CLUB

Row 1: J. Penrod, W. Waugh, R. Marraccini, president; R. Hunter, vice president; Mr. Johnson, T. Tolliver, treasurer; M. Kriston, R. Grusofsky, J. Aulicino
 Row 2: W. Neidermeyer, J. Zukowski, E. Weaver, W. Thornley, R. Cominsky, E. Smith, N. Marraccini, B. Williams
 Row 3: C. Leggon, F. Weight, T. Grundy, J. Boshdosh, D. Forlai, L. Seighman, J. Segursky, T. Criswell
 Row 4: F. James, S. Hatfield, P. Simpson, M. Anderson, P. Hoosac, M. Bove, S. Sloan, C. Byers
 Row 5: E. Devey, W. Szedon, G. Jenkins, G. Simmons, J. Timko, J. Jarvis, J. Hallam, G. Fine, D. Louttit
 Absent: E. Fabin, secretary, C. Bright



VARSITY SPORTS CLUB

Row 1: J. Sweeney, C. Eisenminger, R. McFarland, D. Saunders, Mr. Cree, M. Diaz, J. Voelker, L. Putnak, L. Matus
 Row 2: L. Pritchard, H. Lusk, E. Cooper, F. Law, H. Green, M. McCurdy, R. Saunders, B. Hyatt
 Row 3: J. Penrod, J. Bedogne, A. Dunch, L. Keenan, R. Parkinson, T. Thompson, J. Pelligrini, R. Popp
 Row 4: G. Jenkins, J. Henson, E. Jackson, R. Johnson, L. Dreschler, T. Gregor, H. Eisenminger, D. Dewar

RANGERETTES

Row 1: J. Bobnar, K. Taylor, B. Vecho, president; M. Bove, vice president; Miss Sweeney, Miss Nevin, D. Stanko, secretary; L. Sadler, treasurer; B. McClintoch, M. A. Seman
 Row 2: R. Herman, C. Bedogne, P. Turko, P. Thompson, C. Peters, S. Sampler, D. Vettori, K. Agostoni, G. Agostine, N. Spate
 Row 3: C. McGuffie, D. Spinner, F. Frye, C. Nurnberger, M. Greyshock, M. Morgan, J. Guzi, J. LaCava, C. Garvin
 Row 4: S. Hunter, C. Zanardelli, P. Farren, C. Hodgson, K. Zeletski, C. Eckles, M. Doenges, V. Kissel, S. Grady





BUSINESS STAFF

Miss Burke, *Jane McNamee, *Marcia Papak, *Nancy Tuscano—business manager; Jo Ann Drechsler, *Joy Gandley, *Mary Kay Leeper.



FLAME EDITORS

*Emily Tesznar, *Mary Lu Borrello, Mr. Rutledge, *Gaynell Sheperd—editor-in-chief; Miss Stewart, *Carol Aley.

Senior Journalists publish

PHOTOGRAPHERS

Bryan Ellsworth, *Connie Mamie.



WRITERS AND REPORTERS

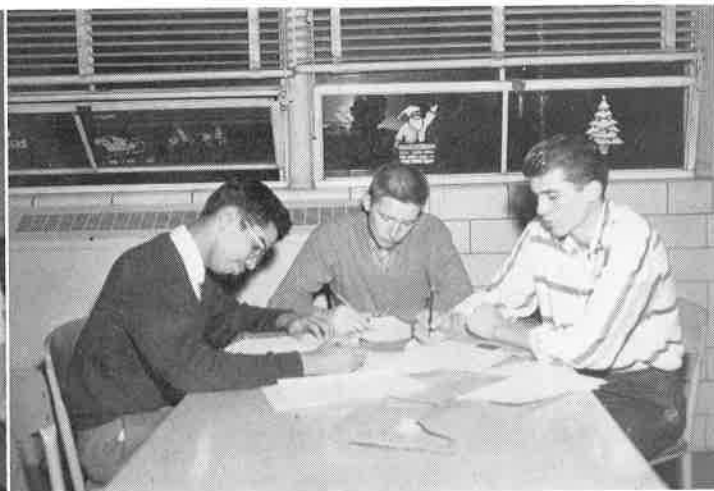
Jean Immel, *Judy Yeager, Kay Podesta, Dolores Scott, *Mary Ann Pohle, *Rose Marie Ambrose, *Sandra Dragone.





RED AND WHITE REVIEW EDITORS

*Rose Marie Ambrose—make-up, *Bonnie Gay Matthews—features, *Jeannene Affinito—news, *Mary Ann Pohle—exchange, *Charlene Pezzoni—editor-in-chief, Mr. Rutledge, *Norma Mountain—copy, Kay Podesta—circulation, *Lois Rostcheck—make-up.



ATHLETIC EDITORS

*Charles Leggon, *Ronald Cominsky, *Dave Burya.

The Flame and Red and White Review

* MEMBERS OF QUILL AND SCROLL
International Honor Society for High School Journalists

TYPISTS

*Judy Yeager, Dolores Scott, *Mary Ann Pohle, *Rose Marie Ambrose.

ARTISTS

Mr. Krill, sponsor; J. A. Pohts, T. Robertson.





HALL PATROL

W. Hyatt, L. Harmon, J. Voelker
Absent: L. Pritchard



PROJECTOR COMMITTEE

F. Weight, L. Malloy, J. Cannon, J. Bobnar, J. Rullo,
D. Louttit, D. Saunders, R. McFarland, R. Hancock, B. Porter



SERVICE CENTER

Row 1: N. Tuscano, J. Gandley, C. Patterson
Row 2: M. A. Pohle, B. Williams, B. Bednar,
V. Gregory
Row 3: J. Blackburn, C. Mele, J. Drechsler
Row 4: P. Bindi, G. Sheperd, J. Immel, C. Pezzoni



DAILY BULLETINS

D. Sickenberger, P. Davis, D. Stanko, A. Perunko, B. Christina,
L. Curcio



HALL MESSENGER



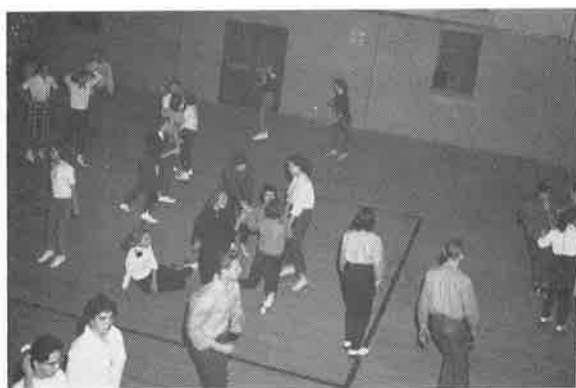
Library Assistants



VARIETY SHOW

Metro Petrosky, Master of Ceremonies

THE SABERS



Flame Skating Party



French Club Dinner



Filling Trays



Washing Dishes

CAFETERIA



ATHLETICS

Twelfth Street is the familiar road to the athletic field gate. Look up the hill from Chess Street and watch the crowds converge from Lincoln and Howard, all taking the pathway to see the big game. Cool breezes of fall, fresh falling snow, or warm sunshine drift over the road according to season. Bright uniforms mud-spattered, the thump of thick boot on pig-skin, cheers, songs and band music are all there as greeting—old familiar scenes and sounds of school game days.

ATHLETICS

Participation in athletic activities is a very important step toward physical well-being and body-building in young people. Just as a vast chain of highways will require a firm, solid roadbed to carry the commerce of the future, so will future citizens need sportsmanship, teamwork, and fair play as a roadbed on which to build a strong moral character. To accomplish this purpose, M. H. S. offers a variety of sports in which all students, boys and girls alike, may participate.

Boys' Gym Class



Girls' Basketball





SOCCER TEAM

Row 1: J. Radus, A. Marraccini, G. McFeely, C. Bright, R. Marcase
 Row 2: P. Hoosac, F. Lomoga, P. Legeza, F. DeRosa, T. Fisher, J. Voelker, R. Bertolini,
 R. Chislacchi, L. Matus
 Row 3: Coach Lignelli, J. Sweeney, J. Evans, P. Jurofcik, D. Diaz, F. Cox, P. Donina

SOCCER

We proudly dedicate this section of our year book to the 1957 soccer team. Repeating their fine performance again this year, the Wildcat eleven won their second W.P.I.A.L. championship in succession and ended the season with an excellent record of nine wins to one defeat.

Lead by the superb coaching of Mr. Frank Lignelli, the Wildcats started their fourth year of competition, which found them defending their '56 crown with seven lettermen returning. The local eleven, determined to take their second championship once more, could be seen practicing on the high school field in the sun, rain, and snow, preparing for the rough

season which faced them.

The Wildcats, paced by the fine ball stopping of goaler Tom Fisher and the excellent defensive and offensive playing of backs Milton "Dink" Diaz and Jim Voelker, set a magnificent two-year record of twenty-one wins before tasting their first defeat in league competition.

The following graduating players will be a great loss to the team: Tom Fisher, Milton Diaz, Jim Voelker, George McFeely, Frank DeRosa, Pete Hoosac, Pete Donina, Ron Marcase.

SOCCER SCORES

| | |
|---------------|------------------|
| Monongahela 6 | Springdale 0 |
| Monongahela 5 | Oakmont 1 |
| Monongahela 5 | South Fayette 3 |
| Monongahela 1 | Bridgeville 0 |
| Monongahela 5 | Snowden 0 |
| Monongahela 4 | Scott Township 0 |
| Monongahela 3 | Bridgeville 0 |
| Monongahela 1 | South Fayette 0 |
| Monongahela 2 | Snowden 3 |
| Monongahela 5 | Scott Township 0 |

9 WINS 1 LOSS



BASEBALL TEAM

Row 1: D. Pender, E. Nicolanco, K. Miller, G. Wassel, A. Rotta, P. Tragone
 Row 2: P. Young, F. DeRosa, J. Evans, M. Petrosky, G. Fabin, G. Peters, D Lutes
 Row 3: R. McFarland, R. Sacane, M. Diaz, E. Kikla, F. Cox, J. Voelker, R. Parkinson, E. Crosby

TENNIS

| | |
|---------------|--------------|
| Monongahela 0 | California 5 |
| Monongahela 2 | Charleroi 3 |
| Monongahela 0 | Monessen 3 |

BASEBALL

| | |
|----------------|--------------|
| Monongahela 10 | Donora 9 |
| Monongahela 7 | Monessen 1 |
| Monongahela 6 | California 4 |
| Monongahela 9 | Bellmar 1 |
| Monongahela 2 | Charleroi 3 |
| Monongahela 13 | Donora 5 |
| Monongahela 3 | Monessen 7 |
| Monongahela 8 | California 5 |
| Monongahela 10 | Bellmar 2 |
| Monongahela 0 | Charleroi 3 |

7 Wins—3 Losses

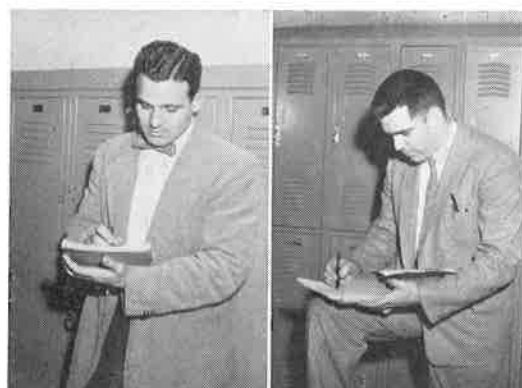
TENNIS TEAM

Row 1: J. Ellis, M. Ferrari, R. Maley
 Row 2: E. Swanson, J. Hughes, S Marra



COACH NATALI
BASEBALL

COACH FLEMING
TENNIS





FOOTBALL SQUAD

Row 1: J. Robertson, L. Pritchard, M. Diaz, D. Saunders, J. Voelker, L. Putnak, T. Robertson, W. Hyatt
 Row 2: R. Affinito, R. MacFarland, J. Sweeney, J. Penrod, F. Gregor, J. Foytik, M. McCurdy, H. Lusk
 Row 3: L. Matus, C. Eisiminger, R. Parkinson, R. Marraccini, R. Popp, T. Law, H. Barnes, L. Cedar
 Row 4: D. Williams, E. Jackson, W. Johnson, L. Drechsler, R. Johnson, B. Dolinar, L. Armstrong, H. Eisiminger
 Row 5: W. Homie, F. Dejeet, P. Gallick, L. Keenan, M. Dorazio, J. Bedogne, L. Kevech, R. Furiga

FOOTBALL

FOOTBALL REVIEW

The 1957 football team ended the season with a record of three wins and five defeats.

The Wildcats pigskin toggers defeated the Snowden Eagles in their first game of the season. The next three games in succession the Wildcats lost. They then defeated the Redstone Hawks, but lost the next two games. The squad closed its season by defeating Brownsville with a score of 26-7.

The boys under the direction of Mr. Cree and his coaching staff worked long and hard to build a well-drilled football team. The Wildcats put forth a tremendous effort but could not cope with their more experienced opponents.

The fine play of the Wildcats was shown by the selection of some of the players to the All-Mon-Valley-Big-Five Football Team. Halfbacks Tracy Robertson,

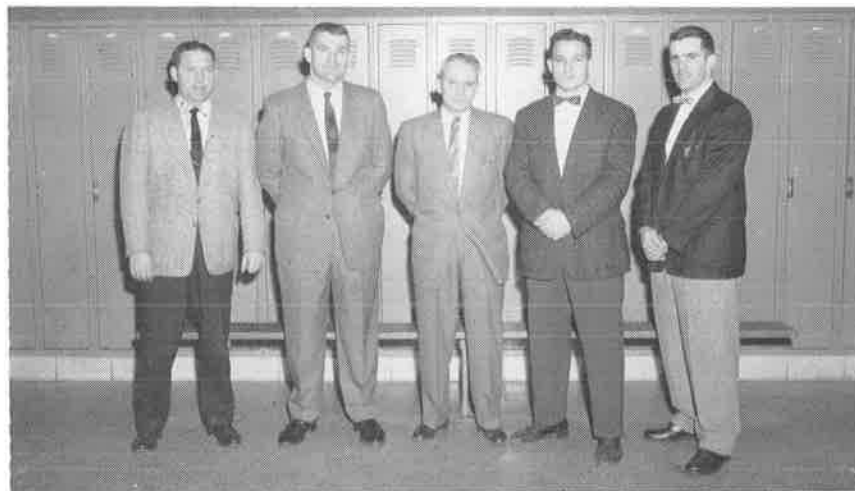
Jim Robertson, Jim Penrod, and lineman Mike McCurdy gained honorable mention. Fullback Milton Diaz and guard Dave Saunders gained berths on the second team. Center Jim Voelker gained a first team berth. Jim Voelker was chosen for the Pennsylvania All-State Team.

1957 RECORD

| | |
|----------------|---------------|
| Monongahela 14 | Snowden 0 |
| Monongahela 7 | Monessen 20 |
| Monongahela 6 | Clairton 38 |
| Monongahela 0 | Washington 26 |
| Monongahela 12 | Redstone 7 |
| Monongahela 13 | Donora 38 |
| Monongahela 0 | Charleroi 38 |
| Monongahela 26 | Brownsville 7 |

COACHES

Mr. Leffard, Mr. Katusa, Head Coach—Mr. Cree, Mr. Natali, Mr. Fleming





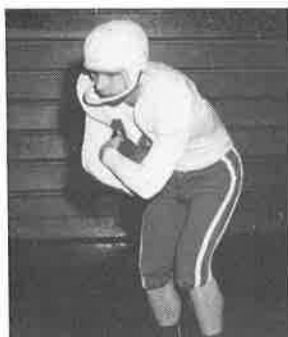
FOOTBALL

Mr. Barbero—Faculty athletic manager; George McFeely, Ed Nicholanco—Student athletic treasurers

ATHLETIC TREASURER

The athletic treasurers, headed by Mr. Barbero, have the responsibility of selling tickets for the games, and also of lining off the football field and preparing the seating arrangements before each game.

Both George McFeely and Eddie Nicholanco have worked diligently at their job. George sold the tickets for the home and away games and Eddie had the duty of collecting them before game time. Each lined off the athletic field before each game during football season and prepared the seating arrangements in the gym during the basketball season.



Milton "Dink" Diaz

— Fullback

Hard running fullback . . . keystone of the backfield . . . asset to the team . . . all-around athlete and sportsman.



Adam "Jerry" Foytik

— Left Tackle

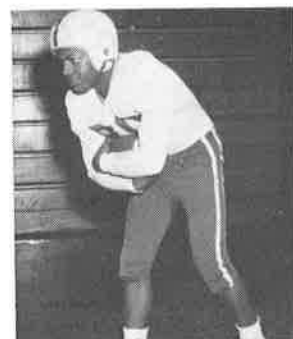
Big man on line . . . hard hitting blocker . . . plays well at tackle . . . the happiest fellow on the squad.



Raymond "Ray" McFarland

— Linebacker

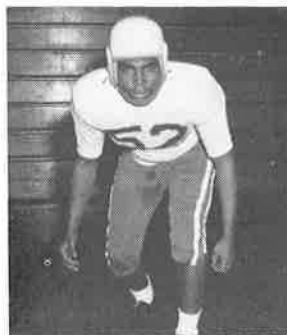
Offensive and defensive man . . . plays alert ball . . . sings while he plays . . . a real sportsman.



Tracy "Lee" Robertson

— Halfback

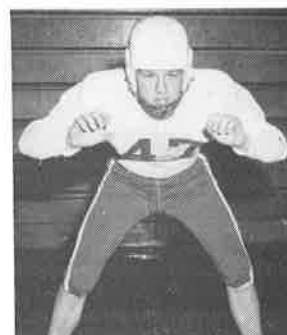
Sure-footed halfback . . . splendid blocking back . . . a very fine athlete to know.



Dave "Skip" Saunders

— Right Guard

Strong man on right side . . . blocks and tackles well . . . plays good defense . . . a true sportsman.



Jim "Banjo" Voelker

— Center

Tough man in the middle of wildcat line . . . Big Five and All-State choice . . . a gentleman on and off the athletic field.



BASKETBALL SQUAD

T. Gregor, P. Kline, G. Jenkins, A. Dunch, H. Green, M. McCurdy, R. Saunders, M. Diaz, J. Pellegrini, T. Thompson, R. Johnson, P. Tragone, W. Johnson
 Managers: H. Eisiminger, R. Parkinson, J. Robertson, J. Miller

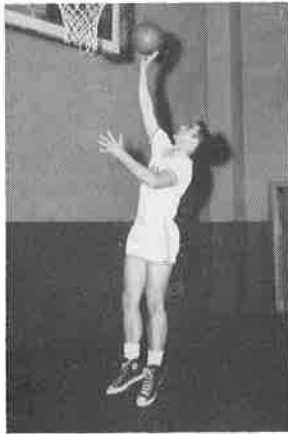
WILDCAT CAGERS

JUNIOR VARSITY

J. Henson, M. Coleman, R. Dewar, W. Neidermeyer, F. Spornak, E. Cooper, G. Simmons, T. Law, L. Drechsler, J. Bosdosh, E. Jackson, L. Keenan, Manager; H. Eisiminger

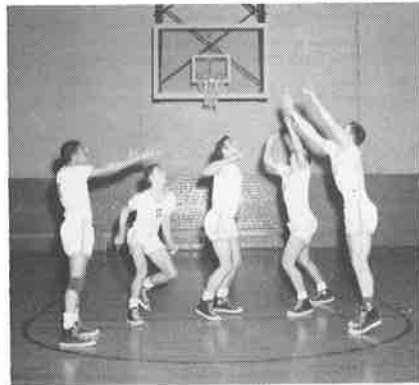


BASKETBALL



MILTON "DINK" DIAZ

Good offensive and defensive man . . . quick on rebounds . . . letterman . . . an able leader . . . very versatile player.



T. Thompson, W. Johnson, M. Diaz, J. Pellegrini, M. McCurdy



Monongahela 36
Monongahela 46
Monongahela 44
Monongahela 44
Monongahela 49
Monongahela 39
Monongahela 41
Monongahela 55

EXHIBITION

Greensburg 53
Snowden 42
Homestead 50
Washington 73
Clairton 76
Rostraver 56
Hempfield 60
Rostraver 33

* LEAGUE

*Monongahela 32
*Monongahela 30
*Monongahela 48
*Monongahela 60
*Monongahela 50
*Monongahela 25
*Monongahela 38
*Monongahela 34
Monongahela 45
*Monongahela 56
*Monongahela 43
*Monongahela 53
*Monongahela 36

Donora 49
Charleroi 82
Brownsville 39
Bellmar 51
California 53
Monessen 65
Donora 61
Charleroi 52
Elizabeth 62
Brownsville 71
Bellmar 42
California 75
Monessen 51



H. Green, R. Johnson, G. Jenkins, R. Saunders, P. Tragone

BASKETBALL

Only two lettermen returned to the 1958 basketball squad; therefore, Coach Al Cree was faced with the tremendous task of rebuilding the team almost completely. The new members were, for the most part, sophomores and juniors who were attempting to make the broad jump from junior high and jayvee teams to the rugged W. P. I. A. L. competition. These boys, knowing too well what lay before them when they marched onto the playing court, practiced long and laboriously, trying to learn the passing, dribbling and shooting tactics that would put them in equal rank with their opponents.

Although the Cats fought valiantly, they could not overcome many of their opponents. Lack of experience time after time cost the Wildcats a victory.

The Wildcats in exhibition competition compiled a record of 2 wins, winning over Snowden and Rostraver, and losing 7. In league competition they made a record of 3 wins, one over Brownsville and two over Bellmar, and 9 losses.

COACHES

Mr. Johnson, Mr. Cree



Miss Nevin and girls in game of shuffleboard



Anyone for darts?

GIRLS' BASKETBALL

GIRLS' ATHLETIC PROGRAM

The Girls' Athletic Program aims to promote good sportsmanship through its many varied activities. Participation in these sports gives the girls a well-rounded school life.

The Girls' Athletic Leaders is an organization which meets during the club period and in the evenings. In the G.A.L. the girls may play basketball, volleyball, shuffleboard and many other athletic games. The Rangerettes is another club closely associated with the G.A.L. The girls go on many interesting and exciting hikes and trips. One period a week is provided for every high school student for physical education. During this period the gym classes

participate in activities such as playing basketball, dancing, exercises, and athletic games.

The athletic program includes various activities for the girls of the high school. The program provides evening recreation, bowling, and hiking for those who enjoy such sports. Besides the regular exercises during the gym classes, games, folk dances and an annual field meet are provided.

GIRLS' BASKETBALL TEAM

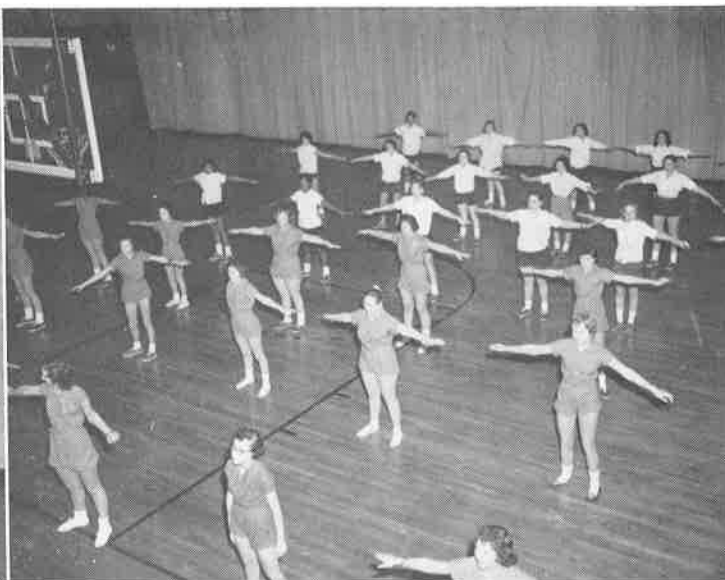
Forwards: M. Arnold, M. Columbus, B. Efaw, P. Feran, J. Johnson, M. Ostovich, B. Vecho, M. Vogt.
Guards: M. Deffobis, D. Jenkins, S. Magee, C. McGuffie, N. Spate, A. Veada.

Girls Playing Basketball





Steady!



One-two-three-four

GIRLS' ATHLETICS

VOLLEYBALL

The girls' volleyball team, open to any interested high school girl, was organized for the purpose of promoting good sportsmanship and of acquainting the girls of Monongahela High School with the girls of other schools.

This year the team had a highly successful season, winning all of their games except two. In the first game they defeated Donora on Monongahela's court and then defeated them again at Donora. They continued their success by defeating California at home.

The team then had a game with the Monongahela Turners which they lost by a very small margin.

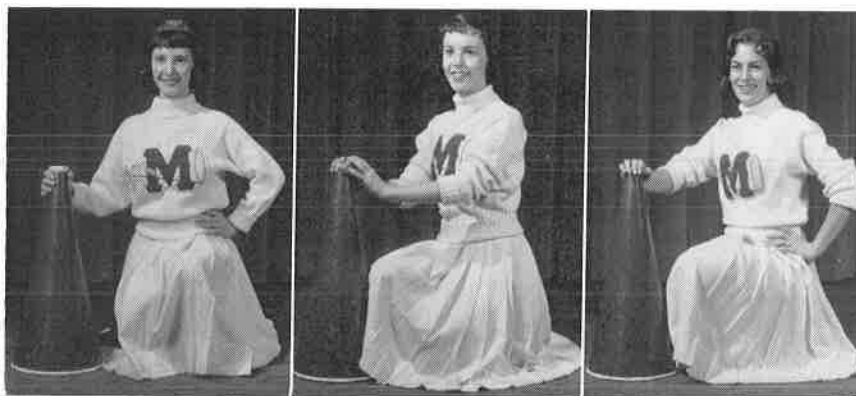
The M. H. S. girls held a volleyball tournament and invited California, Charleroi, and the Monongahela Turners. They succeeded in defeating every team attending, including the Monongahela Turners.

Later in the season, the team had a game with the Monessen Turners, who were district volleyball champions. The Wildcats lost, but not without a hard struggle.

The team finished the season defeating every team except the Monessen Turners; therefore, they hold first place among the high school teams they played.

Girls Playing Volleyball





SENIOR CHEERLEADERS

S. Dragone, P. Valiani, C. Shemo



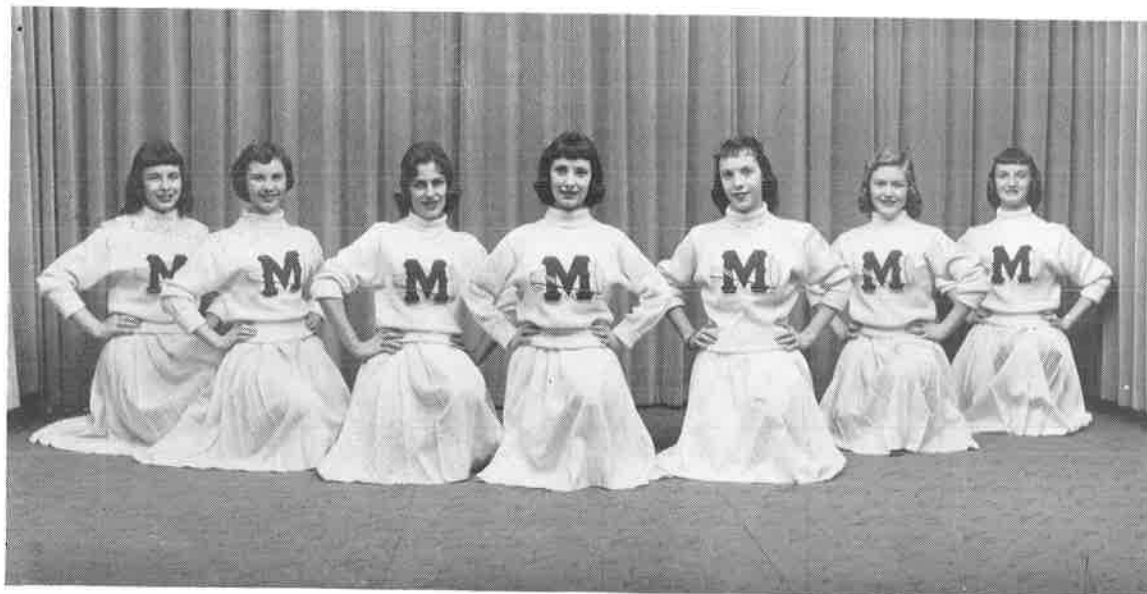
Practice with Mrs. Corrin



Pep Assembly

CHEERLEADERS

A. J. Forsyth, R. Lauder, P. Valiani, S. Dragone, C. Shemo, A. VanKirk, B. McNary





Home Room



Noon Recreation



In line for excuses



Tests



Service Center




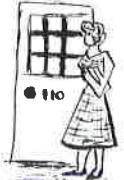
Report Cards






End of the day

Keith, so a real nice boy in my home room. I can see why my Keith is jealous of you. You're real sharp. Lots of lust. (55)

Memories

Can you think back four years to when we were freshmen? Seems so long ago, doesn't it? Remember how we teased Mr. Dyer about those matching socks and ties? That was the year the cheerleaders and majorettes were chosen from our class. Mickey Ferrari and Metro Petrosky could not quite reach the 5-foot mark  in those days. Linda Bartolotta, then a brunette, just couldn't manage to stay  in class.

Then we were sophomores. With "Beacon" in hand, we hurried to our classes. That was good behavior year. Remember those evaluating days? We welcomed Carol Aley  to our class that year. Everyone turned out for the Hayseed Hoedown. Some of our girls donned  sparklers. Flames really sold that year; we all wanted to see our pictures. The Student Council started the banking program in our class.

Juniors already! Are we really upperclassmen? We moved downstairs in the auditorium that year. We couldn't see very well, but it was a promotion. Then we chose our class rings  Remember how we

were excited when they came. How about those lucky kids that got out of class for the prom decorating committee?



The future journalism class was chosen.

And at last we are sophisticated seniors.

Remember how we practiced posing for our senior pictures. Did everyone get a name card?



What announcement did you vote for? There weren't many pennies in circulation then. Everybody was saving for the D.C. trip. We will never forget our last high school prom. The gowns were out of this world.

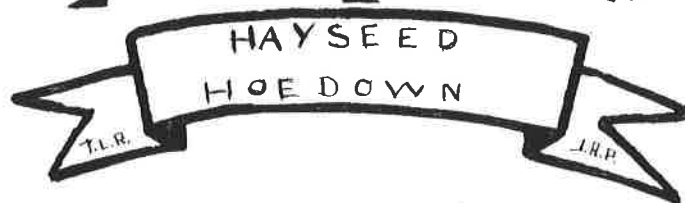
With a tear in eye,



we all showed up for commencement practice. At last, we realized that graduation



and wedding bells were breaking up that old gang of ours!



50 Years
OF SERVICE

RELIANCE
ENGRAVING COMPANY

300 STANWIX STREET • PITTSBURGH 22, PA.

IN THE SHADOW OF THE GATEWAY

OFFICIAL ENGRAVERS TO THE 1958 FLAME

CONGRATULATIONS

to the

CLASS of 1958

Smart Clothing for
HIM

Rigby **TOG**
SHOP
INC.



208 W. MAIN ST. • MONONGAHELA, PA. • BL: 8-9334

FEEL FREE TO JOIN OUR BUDGET CLUB

FINLEYVILLE FURNITURE

"EVERYTHING FOR THE HOME"

FURNITURE — APPLIANCES — FLOOR COVERING

TELEVISION
MAGNAVOX

HOOVER
TAPPAN — PHILCO

GENERAL  ELECTRIC

FRIGIDAIRE

R. C. A.

LOcust 3-3398

Dickens 8-7123

FINLEYVILLE, PA.

O'BRIEN MOTOR COMPANY

CHICK O'BRIEN, Proprietor

GMC TRUCK SALES AND SERVICE

24-HOUR TOWING

MAINTENANCE and OVERHAULING ENGINES

NEW and USED PARTS — PAINTING

GEAR and ELECTRICAL SPECIALISTS

BODY and FENDER REPAIR — ELECTRIC and GAS WELDING

Main Street

New Eagle, Pa.

Phone BL 8-9211

CONGRATULATIONS CLASS OF 1958

FROM

'RONGAUS' MARKET

Groceries — Meats — Produce

CONFECTIONS — TOBACCO

DAIRY PRODUCTS

115 Third Avenue

Phone BL 8-4455

MONONGAHELA, PA.

FREE DELIVERY

WHOLESALE

RETAIL

NATIONALLY KNOWN LINES

THOMPSON PRODUCTS

KEY AUTO SUPPLY

411 West Main Street
Monongahela, Pa.
Blackburn 8-5454

802 Homewood Avenue
Pittsburgh, Pa.
FRemont 1-0115

CONGRATULATIONS CLASS OF 1958

Polaski News Store

"Where Monongahela Buys Greeting Cards"

OFFICE SUPPLIES

SPORTING GOODS

UNDERWOOD AND SMITH-CORONA TYPEWRITERS

CONGRATULATIONS CLASS OF 1958

Frye Candy Company

WHOLESALER

Railroad Street

Monongahela, Pa.

Colvin and Smith

REAL ESTATE and INSURANCE

WESTERN PENNSYLVANIA NATIONAL BANK BUILDING, MONONGAHELA, PA.

Telephone BL 8-4940

— COMPLIMENTS OF —

Martello's Dairy Bar

"Where M. H. S. Students

Meet and Greet Their Friends"

CONGRATULATIONS CLASS OF '58

COMPLIMENTS OF

Pizzutelli's Super Market

QUALITY MEATS AND GROCERIES

"Buy With Confidence"

Third Street

Phone BL 8-4150

COMPLIMENTS OF

Keystone Cleaners

CLEANING, PRESSING, AND REPAIRING

Main Street

Phone BL 8-4969

NEW EAGLE, PA.

COMPLIMENTS

— OF —

Anton Theatre

THIRD STREET

PHONE BL 8-4949

BEST WISHES

William's

Ladies' and Children's Apparel

Monongahela, Pennsylvania

Donora, Pennsylvania

COMPLIMENTS OF

Edward B. Garry

FUNERAL HOME

Air Conditioned

Phone DI 8-7265

CONGRATULATIONS

**Model
Dry Cleaners**

204 Fourth Street

Phone BL 8-6464

GOOD LUCK

SENIORS

OF MHS

Lorenzi's

SERVICE CENTER

THE GRADUATING CLASS

OF 1958



WISHES YOU SUCCESS

Frye's Grocery

MEATS AND GROCERIES

420 West Main Street

BL 8-9069

COMPLIMENTS OF

**Stauffer
Chemical
Company**

**Cicci
Beauty Salon**

FINLEYVILLE, PA.

DI 8-7110

CONGRATULATIONS

— TO THE —

CLASS OF 1958

COMPLIMENTS OF THE

Monongahela
Fire
Department



MONONGAHELA, PA.

BEST WISHES SENIORS

MATTHEWS

120 West Main Street

BL 8-4974

TELEVISIONS

FURNITURE

APPLIANCES

HARDWARE

TOYS

CONGRATULATIONS

CLASS OF '58

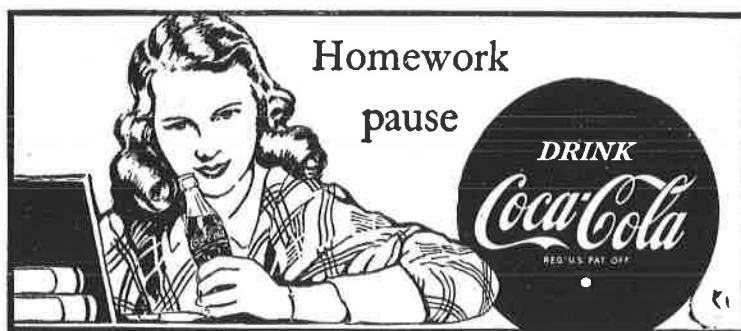
Span & Taylor Drug Store



RUSSELL STOVER CANDY

Second and West Main Streets

Phone BL 8-4545



BOTTLED UNDER AUTHORITY OF THE COCA-COLA COMPANY BY

Coca-Cola Bottling Company of Monongahela

LIGGETT SPRING and AXLE COMPANY

COMPLIMENTS TO THE CLASS OF '58

McGregor's Men's Wear

BL 8-5880

140 West Main Street

Monongahela, Pa.

TO THE CLASS OF 1958 OF MONONGAHELA HIGH SCHOOL:

We extend our Congratulations, and wish you all success in your future work.

TO THE PARENTS OF ALL THE SCHOOL CHILDREN OF MONONGAHELA:

We extend the service required and always found in a reliable REAL ESTATE AND INSURANCE AGENT.

Charles S. Warne

REAL ESTATE & INSURANCE AGENCY

PHONE BL 8-8315

242 WEST MAIN STREET

There are Insurance men and "Policy Sellers!" The latter are chiefly interested in getting your money; but if you want to do business with a concern that is just as interested in seeing you get your money in case of loss — SEE US.

LONG PROTECTION
SHORT COST

Eugene M. Long
INSURANCE

"Your Insurance Problem We Solve"

Auto — Fire — General

421 West Main Street

Phone BL 8-4111

Zeaman's

SMART STYLES

Johnny Jr. Dresses

Skirts, Sweaters

Blouses

Luxite Lingerie

Phone BL 8-6750

COMPLIMENTS

OF

Crompton's
Store

Ross Radio

TV SALES & SERVICE

Philco — Motorola

Phone BL 8-6598 Monongahela

Chess Street, New Eagle

CONGRATULATIONS SENIORS
OF M.H.S.

Monongahela
Hardware
Co., Inc.

Plumbing — Heating — Hardware
Electrical Supplies

235 W. Main Street BL 8-9544
Monongahela, Pa.

GOOD LUCK

CLASS OF 1958

Valley
Cigarette
Service

IT'S

Henry's

FOR DANCING
EVERY NIGHT

Outside or Inside

Route 88

CONGRATULATIONS
CLASS OF 1958

From

Endicott Johnson
and Employees

226-228 West Main St., Monongahela

COMPLIMENTS
— OF —

Vanderslice Greenhouse

Gordon Vanderslice

COMPLIMENTS OF

Ray J. Bautz

Gulf Service Station

RONALD MELLOR

WILLIAM BOUNCE

GEORGE HARTMAN

Blackburn 8-8944

COMPLIMENTS OF

Dierken's DRUG STORE

BERNARD MARCUS, Prop.

"A DRUG STORE FOR
OVER 50 YEARS"

Phone BL 8-5530 204 W. Main St.

COMPLIMENTS OF

The Beauty Nook

Phone BL 8-4115

Chess Street

New Eagle, Pa.

CONGRATULATIONS
TO CLASS OF
1958

Ben's

Men's and Boys' Wear

(BEN RUBIN)

201 Main Street

BL 8-8383

Vickers Brothers Garage

Washington Avenue

Finleyville, Pa.

DI 8-7989

Phone

DI 8-7165

SALES — SERVICE

CHEVROLET

PARTS — ACCESSORIES

CONGRATULATIONS
TO CLASS OF
1958

Peters

RESTAURANT

Traversari Clover Farm

FOOD CENTER

234 West Main Street

BL 8-8822

Patterson Supply Company

"Everything for the Builder"

READY MIXED CONCRETE

CONCRETE BLOCKS

BUILDERS SUPPLIES

LUMBER

MILLWORK

ROOFING

GLASS

PAINT

SASH

BRICK

INSULATION AND TRIM

BL 8-6900

10th STREET

MONONGAHELA, PA.



Lawrence V. Frye

Lumber — Millwork — Builders Supplies

Sixth and Railroad Streets

Phone BL 8-8450

HAMILTON AUTOMATIC
DRYERS
GAS AND ELECTRIC

REFRIGERATORS
RANGES
AUTOMATIC WASHERS

GOOD LUCK, SENIORS!

H & V Sales and Service

TELEVISION AND RADIO REPAIRS
ALL PARTS AND SERVICE GUARANTEED

WESTINGHOUSE APPLIANCES AND AIR CONDITIONERS

Authorized Television and Radio

Phone BL 8-8677

Dealers of RCA Victor and Motorola

111 West Main Street

HIGHEST PRICE FOR TRADE-INS

CONGRATULATIONS

W. F. Alten Insurance Agency

NANCY JANE HAMMOND

CHARLES CHATTAWAY

Representing

TRAVELERS INSURANCE CO.

406 West Main Street

Monongahela, Pa.

CONGRATULATIONS SENIORS

American Turners

CITY TAXI

Third and Main streets

24 HOUR SERVICE

MONONGAHELA, PA.

CLEAN CABS AND COURTEOUS SERVICE

CHARTER BUSES

GREYHOUND AGENT

WESTERN UNION

Frank Pianetti and Robert Stephenson
Co-owners

BL 8-6060

BL 8-4101

Vittone's Market

Quality Meats — Groceries — Produce

PHONE DI 8-7206

GASTONVILLE, PA.

Long's Dairy

GOLDEN GUERNSEY MILK

YOUR LOCAL MILKMAN

Phone BL 8-9529

Miale's Service

CONGRATULATIONS

TO THE

CLASS OF 1958

Main Street, New Eagle

BL 8-8700

COMPLIMENTS OF

REED

CREDIT JEWELERS

171 West Main Street

Phone BL 8-5400

Oscar J. Martello Agency

INSURANCE OF ALL KINDS

Phone BL 8-7150

Main Street

New Eagle, Pa.

DeVore Hardware Co.

"Most Dependable Source
of Supply"

Phone BL 8-7100

437 W. Main St., Monongahela, Pa.

CONGRATULATIONS

CLASS OF 1958

Spalla's Shoe Service

407 Main Street

Monongahela, Pa.

Hill's Clothing Store

CONGRATULATES

CLASS OF 1958

FLOWERS

CRALL'S

Phone BL 8-7373 210 Second St.

WE TELEGRAPH FLOWERS

COMPLIMENTS OF
George's Market

Fourth and Chess Streets

WE HAVE

THE BEST IN THINGS TO EAT

Phones: BL 8-4221 — BL 8-4222

Myers & Myers

HARDWARE

PLUMBING — HEATING

TOYS — SPORTING EQUIP. — GIFTS

219 Main St. — 107-109 4th St.

Phone BL 8-5700

Monongahela, Pa.

Bebe Bell's

SNACK BAR

114 Second Street BL 8-6267

Monongahela, Pa.

ROULE'S
SERVICE STATION

ATLANTIC PRODUCTS

FIRESTONE PRODUCTS

Fifth and Main Streets

BL 8-9969

GEORGE F. ROULE, Prop.

Point Bay-Lee
Dairy Farm

NATURAL RAW MILK BUTTERMILK

"The Bloom of Youth"

Keenan Road Monongahela, Pa.

DIAL BL 8-6400 Herbert Seighman

CONGRATULATIONS AND
BEST WISHES, SENIORS

Riverside Iron
and Steel

Dismantling and Erecting

Dealers in Scrap Iron and New Steel

Sarah & Railroad Streets

Monongahela, Pa.

Res. BL 8-8985 Office BL 8-9200

COMPLIMENTS

OF

Neidermeyer
Barber Shop

BEST WISHES TO THE
CLASS OF 1958

SUN

WALL PAPER and PAINT CO.

Monongahela, Pa.

Keepsake Diamonds Elgin Watches

CONGRATULATIONS

Rushton's Jewelry

For the Gifts You Give With Pride
Let Rushton's Be Your Guide

435 WEST MAIN STREET

BL 8-8250

Parker Pens

Longines

Wittnauer

MILLER'S DRUG STORE



325 WEST MAIN STREET

PHONE BL 8-4321

MONONGAHELA, PA.

Have you an
EYE
for smart Fashions
if you have—then our store is for you



HIGH FASHION AT "ECONOMY" PRICES

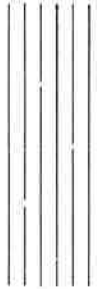
Wishing the Class of 1958 success
in their future careers

"Dressing Correctly Helps You Succeed"

OPPOSITE RIVER BRIDGE

BL 8-5060

THE BEST OF EVERYTHING TO YOU
FINE BOYS AND GIRLS



VICKERS—OLDSMOBILE - CHEVROLET
BINDI BROTHERS—CADILLAC - PONTIAC
LEMLEY MOTORS—LINCOLN - MERCURY
MONONGAHELA FORD COMPANY—FORD
MON CITY MOTORS—DESOTO - PLYMOUTH
FRANK A. PIZZICA—BUICK
LAZZARI MOTORS—IMPERIAL - CHRYSLER - PLYMOUTH

Monongahela Automobile Dealers Association

Mountain Machine and Repair Shop

GENERAL MACHINE WORK

AUTOMATIC AND ARC WELDING

Box 260

BL 8-4231

Courtney, Pa.

Bebout & Yohe Company

AMBULANCE SERVICE

FUNERAL HOME

300 Second Street

Monongahela, Pennsylvania

BL 8-4426

CONGRATULATIONS CLASS OF '58

Right now, we want to express our sincere hope that your plans for the future are fulfilled with extra measure.

Merico S. Lignelli

GENERAL INSURANCE AGENCY

110 Second Street

BL 8-4141

Monongahela, Pa.

You will, we feel certain, be satisfied with our ability and service in the Insurance Industry.

COMPLIMENTS OF

Harry's Meat Market

151 West Main Street

CONGRATULATIONS FROM

Lory's Restaurant

"FOR THOSE WHO ENJOY GOOD FOOD"

417 WEST MAIN STREET

BL 8-7979

COMPLIMENTS OF

John Vecho & Son

PLUMBING . . . HEATING . . . WIRING

769 East Main Street

Monongahela, Pa.

Phone BL 8-9109

"FOR BETTER LIVING"

Reliable Furniture Company

Complete Line in Home Furnishing and Appliances

246 West Main Street

Monongahela, Pennsylvania

Phone BL 8-5905

Hudock Oil and Gas Company

VALLEY INN

VICTORY HILL

MONONGAHELA, R. D. 1 and R. D. 2

GASOLINE, BOTTLE GAS AND EXPLOSIVES

BL 8-9948

COMPLIMENTS OF

Rotary Club

CONGRATULATIONS

SENIORS

Fords Service Station

ROUTE 31

John G. Noble

Real Estate and Insurance

AUTOMOBILE — LIABILITY

FIRE — CASUALTY

SURETY AND FIDELITY BONDS

412 West Main St. Monongahela

Rosenberg's Department Store

ESTABLISHED 1928

"Popular Priced Clothing For
The Entire Family"

Finleyville, Pa.

GENE TAYLOR'S

Clover Farm Market

512 Fourth Street

Free Delivery Phone BL 8-7108

COMPLIMENTS OF

Marne Retreading

FRED TOSI

Second and West Main Streets

Monongahela

Penna.

COMPLIMENTS OF

John L. Simms

FUNERAL HOME

Air-Conditioned

Phone DI 8-7171

Finleyville

CONGRATULATIONS FROM

Johnny's Beauty Shop

507 West Main Street

Phone BL 8-4859

CONGRATULATIONS TO
CLASS OF 1958

Dave Turri

SMART CLOTHIER

Made-to-Measure Suits
Home of Arrow Products
Formal Suits Rented

Phone BL 8-6398

Traversari's Studio

MONONGAHELA, PA.

252 West Main Street

Phone BL 8-6494



Photographer



OFFICIAL PHOTOGRAPHER FOR THE YEARBOOK



Thoroseal

The Perfect Masonry Wall Coating
To Keep Water Out
of Your Masonry Wall



Waterplug

Hydraulic Cement

STOPS WATER INLEAKAGE
Plus Sealing, Sealing, or Sealing the
Masonry Walls and Floor.



Quickseal

Finishing Coat
For Masonry

Resists Water Penetration and Discoloration
Fills with Extra Fine Sand 5-1

THOROSEAL

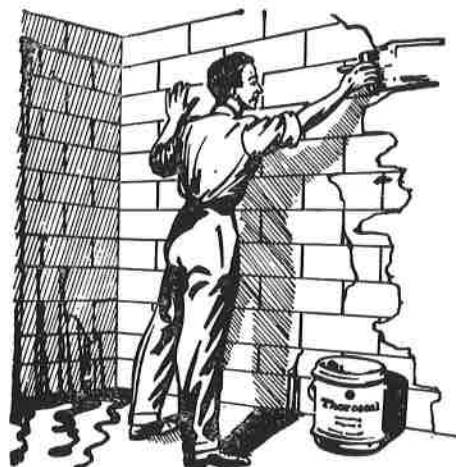
SEALS THE SURFACE AND KEEPS
WATER OUT OF YOUR MASONRY
WALLS ABOVE OR BELOW GRADE.

WATERPLUG

STOPS LEAKS IN YOUR MASONRY
WALLS INSTANTLY AND ADDS
STRUCTURAL STRENGTH.

QUICKSEAL

A BEAUTIFUL, COLORFUL, FINISH
COAT FOR MASONRY WALLS.



So easy to apply
to any masonry
surface.

SEE YOUR LOCAL DEALER

Standard Dry Wall Product's Inc.

Box X, New Eagle, Pa.

Phone Blackburn 8-6700



COMPLIMENTS OF

J. Halpern Company



CONGRATULATIONS TO THE GRADUATING CLASS OF 1958

Chattaway Market

Marne Avenue and Ninth Street

MONONGAHELA

PENNSYLVANIA

Stephens' Lumber Company

LUMBER AND BUILDERS' SUPPLIES

MOORE'S PAINT — BIRD'S ROOFING — GLASS

"If in a Hurry — From a Board to a Carload"

Office and Yards Foot of Eighth Street

Telephone BL 8-4777

Monongahela, Pa.

CONGRATULATIONS!
GRADUATES OF 1958!

Slovak American Citizens Club

101 WEST MAIN STREET

BL 8-9953

Schwartz and Shaver

PRESCRIPTION DRUGGISTS

254 West Main Street

Monongahela, Pa.

PHONE BL 8-4616

CENTRAL Vulcanizing Co.

BILL HANNA

40 Years of Guaranteed Service

Official AAA Service

302 Fourth Street Phone BL 8-8606

COMPLIMENTS OF

Ruth's Shop

DRY GOODS AND NOTIONS

408 West Main Street

Phone BL 8-5055

Greyshock's Bakery

— Specializing in —

WEDDING and BIRTHDAY CAKES

"The Best in Baked Goods"

424 West Main St. Phone BL 8-4179

COMPLIMENTS

OF

Bidzila Brothers

115-117 Main Street

Phone BL 8-7800

Turri's Service Station

Dry Run Road and Chess Street

Phone BL 8-9914

Monongahela, Pa.

Danny's Cleaners

(FORMERLY ATLAS CLEANERS)

Third Street

Monongahela, Pa.

DANNY and MARY PICCOLO

Nahi's Shoe Store

BUSTER BROWN

ROBLEE

AIR STEP

PEDWIN

LIFE STRIDE

315 West Main Street

Monongahela

Penna.

COMPLIMENTS OF

Rocco's Flower Shop

Phone BL 8-5252

213 Third Street

Monongahela, Pa.

Holzapfel Bros.

HARDWOOD
LUMBER

TIMBER
TIES

Finleyville, R. D. 1
Farmington

Elizabeth 2666

Davis 9-5709

BEST OF LUCK TO THE
CLASS OF 1958

YOUNG'S

CONFECTIONERY

MEAT AND GROCERY

1013 Chess Street Phone BL 8-4608

"LET THE SUN SHINE IN"

Best Wishes From

Buddy Henson to Class of '58

Henson & Son

WINDOW CLEANING

Phone BL 8-9586

Osterhout Shoe Store

"DISTINCTIVE FOOTWEAR"

BL 8-6046

239 West Main Street

Monongahela, Pa.

Simoncelli's

TEXACO SERVICE STATION

JACOB SIMONCELLI, Proprietor

GAS — OIL — ACCESSORIES

CAR WASH — LUBRICATION

WE FIX FLATS

Phone BL 8-6418

Chess Street

New Eagle

Congratulations Class of '58

Van Voorhis Insurance Agency

R. P. Van Voorhis

Insurance Broker

Phone DI 8-7591

Johnson Bakery

SPECIALTY

BIRTHDAY AND WEDDING CAKES

Cakes — Cookies

Pies — Bread and Rolls

410 Main Street

BL 8-8311

Monongahela, Pa.

Q & R Coal Company

STRIP MINING AND EXCAVATING

Phone BL 8-4749

Gallatin, Pa.

CONGRATULATIONS

CLASS OF 1958

Drechsler Cabinet Company

Phone Elizabeth 1155

Elrama, Pennsylvania

Combustion Engineering, Inc.



MONONGAHELA DIVISION

MONONGAHELA, PA.

GOOD LUCK, CLASS OF 1958

Ralph Affinito Food Market

MEATS — GROCERIES — PRODUCE — FROZEN FOOD

"SERVICE WITH A SMILE"

Phone BL 8-4400

101 East Main Street

CONGRATULATIONS TO THE CLASS OF 1958

C. L's Monongahela Furniture Co.

"Where good Furniture is not Expensive"

FURNITURE — RUGS — APPLIANCES

205-207 WEST MAIN STREET

MONONGAHELA, PA.

BL 8-8200

Compliments Of

Neighborhood Boys Club

Working with Youth

Cole's Dairy

PASTEURIZED DAIRY PRODUCTS

813 East Main Street

Monongahela, Pa.

Phone BL 8-4729

COMPLIMENTS OF

L. M. Frye



See Us Before You Buy

Monongahela Clay Products Co.

Box 527

Monongahela, Pa.

Phone: Blackburn 8-8303

Finleyville Pharmacy

COMPLETE DRUG SERVICE

S & H Green Stamps

Free Delivery

Telephone DI 8-5653

Finleyville, Pa.

Podroskey Appliances

RCA and VICTOR — COLOR TV
Whirlpool Washers, Dryers
and Refrigerators
RCA Ranges

Sales Services
418 West Main Street BL 8-7629

Frank P. Tesznar

CARBURETOR REPAIR BY
CARTER SCHOOL GRADUATE

Park Avenue Ext.

Phone BL 8-5110

COMPLIMENTS OF

Becker's

MEN'S SHOP

NEWEST MEN'S FASHIONS

257 Main and Third Streets
Monongahela
BL 8-5170

CONGRATULATIONS
CLASS OF 1958

Bartolotta

MEAT MARKET

110 West Main St. Phone BL 8-9414

CONGRATULATIONS
TO CLASS OF
1958

NESTI'S Service Station

Chess Street New Eagle

Marne Television and Appliances

Radio — Television — Records
Appliances — Sales & Service

BL 8-4684 238 W. Main Street
Monongahela, Pa.

ASK AT YOUR GROCER
FRESH BREAD
BAKED BY

New Eagle Bakery

New Eagle, Pa. Phone BL 8-8110

COMPLIMENTS
OF

TODD'S Service Station

FINLEYVILLE, PA. ROUTE 88

CONGRATULATIONS CLASS OF '58

AMERICAN LEGION

FRANK DOWNER

POST 302

MILLER'S SHOPPE

SPORTS WEAR

WOMEN'S ACCESSORIES

LINGERIE

Blackburn 8-7162

321 West Main Street

Monongahela, Pa.

New Valley Cleaning Co.

DRIVE IN AND SAVE

20%

426 East Main Street

CONGRATULATIONS, SENIORS

Italian Citizens of America

West Main Street

Monongahela

A watch repaired here is a dependable time keeper and is guaranteed as such without any qualifications whatsoever.

REASONABLE PRICES

Berty's Jewelry Store

C O M P L I M E N T S

— OF —

Mayer's Drug Store

FINLEYVILLE, PA.

Monongahela Booster's Club



Serving The Youth

CONGRATULATIONS CLASS OF '58

Wayne C. Jones

ELECTRIC

PHILCO DEALER

Phone BL 8-6800

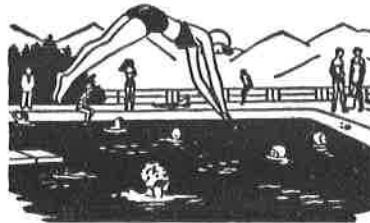
105 West Main Street

CONGRATULATIONS CLASS OF '58

Mineral Beach

ROUTE 88

FINLEYVILLE, PA.



PHONE Dickens 8-7246

**Cheplic's
Market**

Route 88

Finleyville

Dickens 8-7880

CONGRATULATIONS
CLASS OF '58

Tom Scurfield

AGENT

Nationwide Insurance

Companies

MONONGAHELA PUBLISHING COMPANY

*Stationery — Printing — Engraving
School and Office Supplies*

Every student entering college or business should have a

REMINGTON PORTABLE

or

ROYAL PORTABLE



Yawman & Erbe Office Equipment



Boorum & Pease Products

REMINGTON RAND

Quality - Price - Service

Phone: BL 8-7001

The Daily Republican, Monongahela

PATRONS

| | |
|--------------------------------|------------------------------|
| Archery Club | Mr. & Mrs. Andrew Bozic |
| Band Club | Mr. & Mrs. Wesley Brounce |
| Bel Canto Club | Mr. & Mrs. Robert Bulger |
| Biology Club | V. Burnworth |
| Chef's Club | Mr. & Mrs. Newton Caldwell |
| Commercial Club | George S. Callery D.D.S. |
| Driving Club | Mr. & Mrs. Angelo Cirinelli |
| El Circulo Espanal | Mrs. Frank Cominsky |
| English Club | Mr. & Mrs. Eugene P. Connell |
| Entre Amis French I | Mr. & Mrs. James Crane |
| Entre Nous French II | Paula Jane Dannels |
| Future Teachers | Mr. & Mrs. Paul G. Dannels |
| Girls Athletic League | John H. Dorr |
| Going To College Club | Mr. Richard B. Elliott Jr. |
| Going To College Club Bus. Ed. | Mrs. Irene Ellsworth |
| Hi-Y Club | Mr. & Mrs. Harold Fawcett |
| Latin II Club | Ben Farquhar |
| Library Club | Mr. & Mrs. Nello R. Ferrari |
| Demo Club | Dr. & Mrs. Howard Gadd |
| Rangerettes | Virginia Gagliardi |
| Science Club Sr. | Robert J. Gallagher |
| Servettes | Mr. & Mrs. Robert E. Gandley |
| Sigma RHO Delta | Mr. & Mrs. John Garbutt |
| Sophomore Historians I | William Gerboc |
| Sophomore Historians II | Mrs. Mary Gildow |
| Sports Club | Kay Gillingham |
| Usherette Club | Norman G. Golomb M.D. |
| Mr. & Mrs. Bernard Affinito | Mrs. Ruthal Green |
| Miss Rosalie Affinito | Mr. & Mrs. Harry Gregory |
| Mr. & Mrs. Paul E. Aley | Hemmings Flower Garden |
| Mr. & Mrs. Dominick Ambrose | Mr. & Mrs. David Hemmings |
| Mrs. Agnes Ban | Mr. & Mrs. Edward Hoff |
| Mr. & Mrs. Leo Bartolotta | Mr. & Mrs. Thomas Howard |
| Mrs. Mary Bednar | Mr. & Mrs. Glenn Hoffman |
| Mr. & Mrs. John Benczo Jr. | Mrs. Emma B. Hutchko |
| Mr. & Mrs. Walter Berwick | Mr. & Mrs. Robert C. Immel |
| Mr. & Mrs. Victor Bindi | Mr. & Mrs. Charles E. Ingram |
| Mrs. Helen M. Briscoe | Mr. & Mrs. Louis Innocenti |
| Ronald Borrello | Mrs. Rose Isaac |
| Marsha Jean Boyd | Mr. Ruse Isaac |
| | Dr. Paul W. Ivill |

PATRONS

| | |
|--------------------------------|--------------------------------|
| Mr. & Mrs. Arthur W. Jeffers | J. S. Oehrle M. D. |
| Mr. & Mrs. George Jonas | Mr. & Mrs. Louis Panseri |
| T. E. Jonas | Mr. & Mrs. Pete Panseri |
| Mr. & Mrs. George Jordan | Joseph Pauko |
| Nancy Keenan | Mr. Edward A. Paulick |
| Mr. & Mrs. Claude Kirby | Robert David Papak |
| Mr. & Mrs. Robert Lauder | Mr. & Mrs. Jake Paver |
| John W. Lee | Mr. & Mrs. Morris Pesognelli |
| Mr. & Mrs. L. S. Leeper | Mr. & Mrs. George Pezzoni |
| Mr. & Mrs. Joseph S. Leeper | Mrs. Dolly J. Piggford |
| Miss Mary Kay Leeper | Mr. & Mrs. Henry Podesta |
| Lois Lees | Mr. & Mrs. Raymond P. Podesta |
| Mr. & Mrs. Albert Lenik | Mr. & Mrs. Frank R. Pohle Jr. |
| Mr. & Mrs. Evan J. Lewis Sr. | Mr. & Mrs. Frank Pohle Sr. |
| Mrs. Lucille Leggon | Mrs. Irene Preston |
| Mr. & Mrs. Joseph Lupetin | George F. Prince |
| Pat Marietta | Mr. & Mrs. John C. Pulford Sr. |
| Mr. & Mrs. Herman Martin | Fannie Rae Richardson |
| Ralph E. Martin | Mr. & Mrs. J. I. Ritchey |
| Mr. Joseph Maruca | Mr. & Mrs. Vaughn W. Ritchey |
| Giavanna Mastraianni | Mr. & Mrs. Anthony Rosati |
| Mr. & Mrs. John Matthews | Lois Rostcheck |
| Bertha E. McDonald | Mr. & Mrs. Nick Rostcheck |
| Mr. & Mrs. William E. McDonald | Mrs. William Saunders |
| Donald McFeely | Mr. & Mrs. Edgar T. Sheperd |
| Mr. & Mrs. J. T. McHugh | Mrs. Rollie Smith |
| Jane McNamee | Miss Ellen Styche |
| Mr. & Mrs. John McNamee | Student Council of Monongahela |
| Mr. & Mrs. Robert V. McNary | Sichi Farm Supply |
| Mrs. Josephine McFeely | Dr. W. P. Taylor |
| Mr. & Mrs. R. W. McVicker | Arlene Tessi |
| Emily Milkent | Eleanor Toth |
| Martha Miller | Mrs. C. F. Tuscano Jr. |
| Pat Minyon | Clarence Tuscano |
| Mrs. Harry Morris | Mr. & Mrs. Victor Villers |
| Harry Morris | Mrs. Michael Vinoverski |
| Mr. & Mrs. William R. Mountain | Nellie Caruso Volker |
| R. H. Muir Family | Mrs. Agnes Williams |
| Carole Namie | Mrs. Ray Yeager |
| Mr. & Mrs. Charles Neidermeyer | Anonymous |
| Charles E. Noble | Anonymous |

With
lots of love to a
dear sweet and sharp
kid. Don't ever forget the
red. We have had in
the past floor and hand
only the
best possible can happen to you.
I am always
yours
1957